



Key Title Group

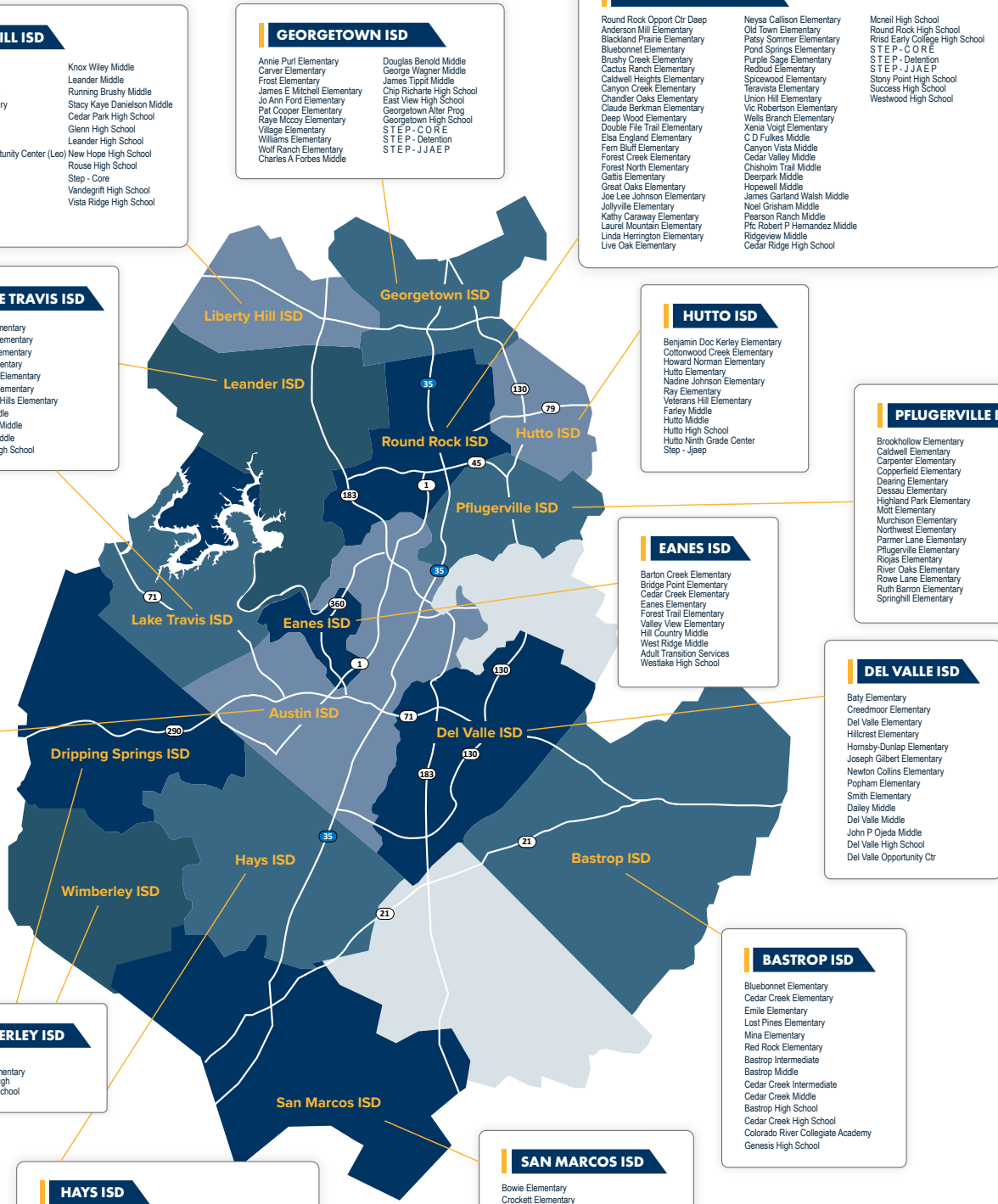
900 S. Capital of Texas Hwy,
Suite 100, Austin, TX 78746

512.402.3300

2022

CENTRAL TEXAS

SCHOOL RATINGS



- LEANDER ISD**
- Leander Extended Opportunity
 - Ada Mae Fabian Elementary
 - Bagdad Elementary
 - Block House Creek Elementary
 - C C Mason Elementary
 - Charlotte Cox Elementary
 - Christine Camacho Elementary
 - Cypress Elementary
 - Deer Creek Elementary
 - Grandview Hills Elementary
 - Jim Plain Elementary
 - Larkspur Elementary
 - Laura Welch Bush Elementary
 - Lois F Giddens Elementary
 - Monta Jane Akin Elementary
 - Officer Leonard A Reed Elementary
 - Parkside Elementary
 - Patricia Knowles Elementary
 - Pauline Naumann Elementary
 - Pleasant Hill Elementary
 - River Place Elementary
 - River Ridge Elementary
 - Ronald Reagan Elementary
 - Rutledge Elementary
 - Steiner Ranch Elementary
 - Tarvin Elementary
 - Westside Elementary
 - Whitestone Elementary
 - William J Winkley Elementary
 - Arie L Henry Middle
 - Canyon Ridge Middle
 - Cedar Park Middle
 - Florence W Stiles Middle
 - Four Points Middle
 - Knox Wiley Middle
 - Leander Middle
 - Running Brushy Middle
 - Stacy Kaye Danielson Middle
 - Cedar Park High School
 - Glenn High School
 - Leander High School
 - New Hope High School
 - Rouse High School
 - Step - Detention
 - Step - Core
 - Vandegrift High School
 - Vista Ridge High School

- LIBERTY HILL ISD**
- Bill Burden Elementary
 - Liberty Hill Elementary
 - Louine Noble Elementary
 - Rancho Sierra Elementary
 - Santa Rita Elementary
 - Liberty Hill Middle
 - Santa Rita Middle
 - Leander Extended Opportunity Center (Leo)
 - Liberty Hill High School
 - Step - Detention
 - Step - Jjaep
 - Cedar Park Middle
 - Florence W Stiles Middle
 - Four Points Middle
 - Knox Wiley Middle
 - Leander Middle
 - Running Brushy Middle
 - Stacy Kaye Danielson Middle
 - Cedar Park High School
 - Glenn High School
 - Leander High School
 - New Hope High School
 - Rouse High School
 - Step - Core
 - Vandegrift High School
 - Vista Ridge High School

- GEORGETOWN ISD**
- Annie Purl Elementary
 - Carver Elementary
 - Frost Elementary
 - James E Mitchell Elementary
 - Jo Ann Ford Elementary
 - Pat Cooper Elementary
 - Raye McCoy Elementary
 - Village Elementary
 - Williams Elementary
 - Wolf Ranch Elementary
 - Charles A Forbes Middle
 - Douglas Benold Middle
 - George Wagner Middle
 - James Tippit Middle
 - Chip Richters High School
 - East View High School
 - Georgetown Alter Prog
 - Georgetown High School
 - STEP - CORE
 - STEP - Detention
 - STEP - JJAEP

- ROUND ROCK ISD**
- Round Rock Opport Ctr
 - Anderson Hill Elementary
 - Blackland Prairie Elementary
 - Bluebonnet Elementary
 - Brushy Creek Elementary
 - Cactus Ranch Elementary
 - Caldwell Heights Elementary
 - Canyon Creek Elementary
 - Chandler Oaks Elementary
 - Claude Berkman Elementary
 - Deep Wood Elementary
 - Double File Trail Elementary
 - Elas England Elementary
 - Fern Bluff Elementary
 - Forest Creek Elementary
 - Forest North Elementary
 - Gettis Elementary
 - Great Oaks Elementary
 - Joe Lee Johnson Elementary
 - Jollyville Elementary
 - Kathy Caraway Elementary
 - Laurel Mountain Elementary
 - Linda Herrington Elementary
 - Live Oak Elementary
 - Neysa Callison Elementary
 - Old Town Elementary
 - Patsy Sommer Elementary
 - Pond Springs Elementary
 - Purple Sage Elementary
 - Redoubt Elementary
 - Spicewood Elementary
 - Taravista Elementary
 - Union Hill Elementary
 - Vict Robertson Elementary
 - Wells Branch Elementary
 - Cedar Valley Middle
 - Chisholm Trail Middle
 - Canyon Vista Middle
 - Chisholm Trail Middle
 - Deerpark Middle
 - Hopewell Middle
 - James Garland Walsh Middle
 - Noel Graham Middle
 - Pearson Ranch Middle
 - Pic Robert P Hernandez Middle
 - Ridgeview Middle
 - Cedar Ridge High School
 - Mcneil High School
 - Round Rock High School
 - Risid Early College High School
 - STEP - CORE
 - STEP - Detention
 - STEP - JJAEP
 - Stony Point High School
 - Success High School
 - Westwood High School

- LAKE TRAVIS ISD**
- Bee Cave Elementary
 - Lake Pointe Elementary
 - Lake Travis Elementary
 - Lakeway Elementary
 - Rough Hollow Elementary
 - Serene Hills Elementary
 - West Cypress Hills Elementary
 - Bee Cave Middle
 - Hudson Bend Middle
 - Lake Travis Middle
 - Lake Travis High School

- HUTTO ISD**
- Benjamin Doc Kerley Elementary
 - Cottonwood Creek Elementary
 - Howard Norman Elementary
 - Hutto Elementary
 - Nadine Johnson Elementary
 - Ray Elementary
 - Veterans Hill Elementary
 - Farley Middle
 - Hutto Middle
 - Hutto High School
 - Hutto Ninth Grade Center
 - Step - Jjaep

- PFLUGERVILLE ISD**
- Brookhollow Elementary
 - Caldwell Elementary
 - Carpenter Elementary
 - Copperfield Elementary
 - Dearing Elementary
 - Dessau Elementary
 - Highland Park Elementary
 - Mott Elementary
 - Murchison Elementary
 - Northwest Elementary
 - Parmer Lane Elementary
 - Pflugerville Elementary
 - Riojas Elementary
 - River Oaks Elementary
 - Rowe Lane Elementary
 - Ruth Barron Elementary
 - Springhill Elementary
 - Timmerman Elementary
 - Weland Elementary
 - Wilhelmina Delco Elementary
 - Windermere Elementary
 - Botis Middle
 - Cele Middle
 - Dessau Middle
 - Kelly Lane Middle
 - Park Crest Middle
 - Pflugerville Middle
 - Westview Middle
 - Westview Middle
 - Hendrickson High School
 - John B Conally High School
 - Pflugerville High School
 - Travis Co JJAEP
 - Weiss High School

- EANES ISD**
- Barton Creek Elementary
 - Bridge Point Elementary
 - Cedar Creek Elementary
 - Eanes Elementary
 - Forest Trail Elementary
 - Valley View Elementary
 - Hill Country Middle
 - West Ridge Middle
 - Adult Transition Services
 - Westlake High School

- DEL VALLE ISD**
- Baty Elementary
 - Creedmoor Elementary
 - Del Valle Elementary
 - Hillcrest Elementary
 - Hornsby-Dunlap Elementary
 - Joseph Gilbert Elementary
 - Newton Collins Elementary
 - Popham Elementary
 - Smith Elementary
 - Daley Middle
 - Del Valle Middle
 - John P Ogeda Middle
 - Del Valle High School
 - Del Valle Opportunity Ctr

- AUSTIN ISD**
- Alternative Learning Center
 - Austin St Hospital
 - Richards Sch For Young Women Leaders
 - Rosedale
 - Allison Elementary
 - Andrews Elementary
 - Baldwin Elementary
 - Baranoff Elementary
 - Barrington Elementary
 - Barton Hills Elementary
 - Bear Creek Elementary
 - Becker Elementary
 - Blackshear Elementary
 - Blanton Elementary
 - Blazier Elementary
 - Boone Elementary
 - Brentwood Elementary
 - Brown Elementary
 - Byrker Woods Elementary
 - Campbell Elementary
 - Casey Elementary
 - Casis Elementary
 - Clayton Elementary
 - Cook Elementary
 - Cowan Elementary
 - Cunningham Elementary
 - Davis Elementary
 - Dawson Elementary
 - Doss Elementary
 - Galindo Elementary
 - Govalle Elementary
 - Graham Elementary
 - Guerrero Thompson
 - Gullett Elementary
 - Harris Elementary
 - Hart Elementary
 - Highland Park Elementary
 - Hill Elementary
 - Houston Elementary
 - Jordan Elementary
 - Joslin Elementary
 - Kiker Elementary
 - Kocurek Elementary
 - Langford Elementary
 - Lee Elementary
 - Linder Elementary
 - Maplewood Elementary
 - Mathews Elementary
 - Moore Elementary
 - Menchaca Elementary
 - Mills Elementary
 - Norman-Sims Elementary
 - Oak Hill Elementary
 - Oak Springs Elementary
 - Odom Elementary
 - Ortega Elementary
 - Overton Elementary
 - Padron Elementary
 - Palm Elementary
 - Patton Elementary
 - Pecan Springs Elementary
 - Perez Elementary
 - Pickle Elementary
 - Pillow Elementary
 - Pleasant Hill Elementary
 - Reily Elementary
 - Ridgetop Elementary
 - Rodriguez Elementary
 - Sanchez Elementary
 - St Elementarymo Elementary
 - Summitt Elementary
 - Sunset Valley Elementary
 - Travis Hts Elementary
 - Uphaus Early Childhood Center
 - Walnut Creek Elementary
 - Walden Elementary
 - Williams Elementary
 - Winn Elementary
 - Woodridge Elementary
 - Wooten Elementary
 - Zavala Elementary
 - Zaker Elementary
 - Baley Middle
 - Bedichek Middle
 - Burnet Middle
 - Covington Middle
 - Dobie Middle
 - Garcia Ymla
 - Gorzcyki Middle
 - Kealing M S
 - Lamar M S
 - Lively Middle
 - Martin Middle
 - Mendez Middle
 - Murchison Middle
 - O Henry Middle
 - Parades M S
 - Sadler Means Ywla
 - Small Middle
 - Webb M S
 - Akins High School
 - Anderson High School
 - Austin High School
 - Bowie High School
 - Crockett Echs
 - Eastside Memorial Echs
 - Garza Independence High School
 - Graduation Prep Academy Navarro
 - Graduation Preparatory Academy
 - Greenleaf Noc
 - International High School
 - Lasa High School
 - Lbj Echs
 - Leadership Academy
 - Mccallum High School
 - Navarro Early College High School
 - Northeast Early College High School
 - Phoenix Academy
 - Travis County Day School
 - Travis County Juvenile Detention Center
 - Travis Early College High School

- WIMBERLEY ISD**
- Blue Hole Pri
 - Jacob S Well Elementary
 - Danforth Junior High
 - Wimberley High School

- BASTROP ISD**
- Bluebonnet Elementary
 - Cedar Creek Elementary
 - Emile Elementary
 - Lost Pines Elementary
 - Mina Elementary
 - Red Rock Elementary
 - Bastrop Intermediate
 - Bastrop Middle
 - Cedar Creek Intermediate
 - Cedar Creek Middle
 - Bastrop High School
 - Cedar Creek High School
 - Colorado River Collegiate Academy
 - Genesis High School

- HAYS ISD**
- Alter Impact Ctr
 - Blanco Vista Elementary
 - Buda Elementary
 - Camino Real Elementary
 - Carpenter Hill Elementary
 - Elm Grove Elementary
 - Hemphill Elementary
 - Kyle Elementary
 - Laura B Nepley Elementary
 - Ralph Pluger Elementary
 - Science Hall Elementary
 - Susie Fuentes Elementary
 - Tobias Elementary
 - Tom Green Elementary
 - Uhlend Elementary
 - Armando Chapa Middle
 - D J Red Simon Middle
 - Dr T C McCormick Jr Middle
 - Eric Dahlstrom Middle
 - Laura B Wallace Middle
 - R C Barton Middle
 - Jack C Hays High School
 - Lehman High School
 - Live Oak Academy
 - Moe And Gene Johnson High School

- SAN MARCOS ISD**
- Bowie Elementary
 - Crockett Elementary
 - Dezavala Elementary
 - Hernandez Elementary
 - Mendez Elementary
 - Rodriguez Elementary
 - Travis Elementary
 - Goodnight Middle
 - Miller Middle
 - San Marcos High School
 - Risid Early College High School
 - STEP - CORE
 - STEP - Detention
 - STEP - JJAEP
 - Stony Point High School
 - Success High School
 - Westwood High School

- DRIPPING SPRINGS ISD**
- Cypress Springs Elementary
 - Dripping Springs Elementary
 - Rooster Springs Elementary
 - Sycamore Springs Elementary
 - Walnut Springs Elementary
 - Dripping Springs Middle
 - Sycamore Springs Middle
 - Dripping Springs High School

DISTRICT	CAMPUS	GRADES	NUMBER OF STUDENTS	OVERALL RATING	OVERALL SCORE	STUDENT ACHIEVEMENT RATING	STUDENT ACHIEVEMENT SCORE	SCHOOL PROGRESS RATING	SCHOOL PROGRESS SCORE	ACADEMIC GROWTH RATING	ACADEMIC GROWTH SCORE	DISTINCTION ELA/READING	DISTINCTION MATHEMATICS	DISTINCTION SCIENCE	DISTINCTION SOC STUDIES	DISTINCTION PROGRESS THE GAPS	DISTINCTION CLOSING THE GAPS	DISTINCTION POSTSECONDARY READINESS
AUSTIN ISD	Alternative Learning Center	06 - 12	58	Not Rated	.	Not Rated	.	Not Rated	.	Not Rated	.							
	Austin St Hospital	04 - 11	10	Not Rated	.	Not Rated	.	Not Rated	.	Not Rated	.							
	Richards Sch For Young Women Leaders	06 - 12	890	A	94	A	96	A	93	C	73	Earned	Earned	Earned	Earned	Not Earned	Not Earned	Earned
	Rosedale	EE - 12	124	Not Rated	.	Not Rated	87	Not Rated	98	Not Rated	98							
	Allison Elementary	PK - 05	380	B	87	Not Rated	64	A	93	A	93	Not Earned	Not Earned	Not Earned		Not Earned	Not Earned	Not Earned
	Andrews Elementary	PK - 05	324	C	74	Not Rated	56	C	75	C	75	Not Earned	Not Earned	Not Earned		Not Earned	Not Earned	Not Earned
	Baldwin Elementary	EE - 05	592	A	96	A	94	A	92	A	92	Earned	Earned	Earned		Not Earned	Earned	Earned
	Baranoff Elementary	KG - 05	783	A	95	A	92	A	94	A	94	Earned	Not Earned	Not Earned		Earned	Not Earned	Not Earned
	Barrington Elementary	PK - 05	378	Not Rated	68	Not Rated	56	Not Rated	67	Not Rated	67	Not Earned	Not Earned	Not Earned		Not Earned	Not Earned	Not Earned
	Barton Hills Elementary	KG - 06	378	A	96	A	94	A	92	A	92	Earned	Not Earned	Not Earned		Earned	Earned	Not Earned
	Bear Creek Elementary	PK - 05	540	A	95	A	93	A	92	A	92	Not Earned	Not Earned	Not Earned		Not Earned	Earned	Not Earned
	Becker Elementary	PK - 05	441	A	95	A	91	A	94	A	94	Earned	Not Earned	Not Earned		Earned	Not Earned	Not Earned
	Blackshear Elementary	PK - 05	287	A	90	C	74	A	96	A	96	Not Earned	Not Earned	Not Earned		Earned	Not Earned	Not Earned
	Blanton Elementary	PK - 05	560	B	89	B	82	A	94	A	94	Earned	Not Earned	Earned		Earned	Not Earned	Not Earned
	Blazier Elementary	KG - 06	1,010	A	94	B	85	A	91	A	91	Not Earned	Earned	Not Earned		Not Earned	Earned	Earned
	Boone Elementary	EE - 05	462	B	87	B	82	A	91	A	91	Not Earned	Not Earned	Not Earned		Not Earned	Not Earned	Not Earned
	Brentwood Elementary	EE - 05	524	A	94	A	93	A	92	A	92	Not Earned	Earned	Not Earned		Not Earned	Not Earned	Earned
	Brown Elementary	PK - 05	489	B	84	Not Rated	53	B	89	B	89	Not Earned	Not Earned	Not Earned		Not Earned	Not Earned	Not Earned
	Bryker Woods Elementary	KG - 05	349	Az	93	A	92	A	91	A	91	Not Earned	Not Earned	Not Earned		Not Earned	Not Earned	Not Earned
	Campbell Elementary	EE - 05	169	C	72	Not Rated	56	C	75	C	75	Not Earned	Not Earned	Not Earned		Not Earned	Not Earned	Not Earned
	Casey Elementary	EE - 05	458	A	92	C	77	A	95	A	95	Not Earned	Not Earned	Not Earned		Earned	Not Earned	Not Earned
	Casis Elementary	EE - 05	608	A	97	A	94	A	96	A	96	Earned	Not Earned	Earned		Earned	Earned	Earned
	Clayton Elementary	EE - 05	647	A	96	A	94	A	92	A	92	Earned	Earned	Earned		Not Earned	Earned	Earned
	Cook Elementary	PK - 05	429	B	87	C	72	A	90	A	90	Not Earned	Not Earned	Not Earned		Not Earned	Not Earned	Not Earned
	Cowan Elementary	EE - 05	534	A	95	A	91	A	94	A	94	Earned	Not Earned	Earned		Earned	Earned	Not Earned
	Cunningham Elementary	EE - 05	316	A	91	B	80	A	93	A	93	Earned	Earned	Earned		Earned	Earned	Earned
	Davis Elementary	EE - 05	556	A	92	A	91	A	93	A	93	Not Earned	Not Earned	Not Earned		Earned	Not Earned	Not Earned
Dawson Elementary	EE - 05	262	C	71	Not Rated	54	C	74	C	74	Not Earned	Not Earned	Not Earned		Not Earned	Not Earned	Not Earned	
Doss Elementary	PK - 05	811	A	96	A	94	A	91	A	91	Earned	Earned	Not Earned		Not Earned	Earned	Earned	
Galindo Elementary	PK - 05	486	B	87	Not Rated	65	A	91	A	91	Not Earned	Not Earned	Not Earned		Not Earned	Not Earned	Not Earned	

DISTRICT	CAMPUS	GRADES	NUMBER OF STUDENTS	OVERALL RATING	OVERALL SCORE	STUDENT ACHIEVEMENT RATING	STUDENT ACHIEVEMENT SCORE	SCHOOL PROGRESS RATING	SCHOOL PROGRESS SCORE	ACADEMIC GROWTH RATING	ACADEMIC GROWTH SCORE	DISTINCTION ELA/READING	DISTINCTION MATHEMATICS	DISTINCTION SCIENCE	DISTINCTION SOC STUDIES	DISTINCTION PROGRESS THE GAPS	DISTINCTION CLOSING THE GAPS	DISTINCTION POSTSECONDARY READINESS
AUSTIN ISD (CONT.)	Govalle Elementary	EE - 05	303	Not Rated	65	Not Rated	53	Not Rated	67	Not Rated	67	Not Earned	Not Earned	Not Earned	Not Earned	Not Earned	Not Earned	Not Earned
	Graham Elementary	EE - 05	442	B	89	C	76	A	94	A	94	Earned	Not Earned	Not Earned	Earned	Not Earned	Earned	Earned
	Guerrero Thompson	PK - 05	554	B	89	C	77	A	92	A	92	Not Earned	Earned	Not Earned	Not Earned	Earned	Earned	Earned
	Gullett Elementary	EE - 05	547	A	96	A	94	A	92	A	92	Earned	Not Earned	Not Earned	Earned	Earned	Earned	Not Earned
	Harris Elementary	EE - 05	399	C	76	Not Rated	56	C	77	C	77	Not Earned	Not Earned	Not Earned	Not Earned	Not Earned	Not Earned	Not Earned
	Hart Elementary	PK - 05	509	A	91	C	74	A	91	A	91	Not Earned	Not Earned	Not Earned	Not Earned	Earned	Earned	Earned
	Highland Park Elementary	KG - 05	643	A	96	A	94	A	92	A	92	Earned	Earned	Earned	Earned	Earned	Earned	Earned
	Hill Elementary	EE - 05	860	A	95	A	93	A	93	A	93	Not Earned	Earned	Earned	Not Earned	Not Earned	Not Earned	Not Earned
	Houston Elementary	EE - 05	456	B	85	Not Rated	56	B	89	B	89	Not Earned	Not Earned	Not Earned	Earned	Not Earned	Not Earned	Not Earned
	Jordan Elementary	EE - 05	518	B	85	Not Rated	58	B	89	A	91	Not Earned	Not Earned	Not Earned	Not Earned	Not Earned	Not Earned	Not Earned
	Joslin Elementary	EE - 05	249	B	88	C	78	A	90	A	90	Not Earned	Not Earned	Not Earned	Not Earned	Not Earned	Not Earned	Not Earned
	Kiker Elementary	EE - 05	730	A	93	A	92	A	92	A	92	Not Earned	Not Earned	Not Earned	Not Earned	Not Earned	Not Earned	Not Earned
	Kocurek Elementary	PK - 05	504	B	89	C	73	A	93	A	93	Not Earned	Not Earned	Not Earned	Earned	Not Earned	Not Earned	Not Earned
	Langford Elementary	EE - 05	479	B	80	Not Rated	49	B	82	B	82	Not Earned	Not Earned	Not Earned	Not Earned	Not Earned	Not Earned	Not Earned
	Lee Elementary	KG - 06	398	A	94	A	93	A	92	A	92	Earned	Not Earned	Earned	Earned	Not Earned	Not Earned	Not Earned
	Linder Elementary	PK - 05	484	B	82	Not Rated	59	B	85	B	85	Not Earned	Not Earned	Not Earned	Not Earned	Not Earned	Not Earned	Not Earned
	Maplewood Elementary	PK - 05	375	B	88	A	90	A	91	A	91	Earned	Not Earned	Not Earned	Not Earned	Not Earned	Not Earned	Not Earned
	Mathews Elementary	PK - 06	332	A	95	A	93	A	93	A	93	Earned	Not Earned	Not Earned	Earned	Earned	Earned	Not Earned
	Mcbee Elementary	EE - 05	363	A	90	Not Rated	67	A	96	A	96	Not Earned	Not Earned	Not Earned	Earned	Not Earned	Not Earned	Not Earned
	Menchaca Elementary	EE - 05	701	B	85	C	71	B	89	B	89	Not Earned	Not Earned	Not Earned	Not Earned	Not Earned	Not Earned	Not Earned
	Mills Elementary	EE - 05	752	A	96	A	94	A	93	A	93	Earned	Earned	Earned	Not Earned	Earned	Earned	Earned
	Norman-Sims Elementary	PK - 05	276	B	83	Not Rated	56	B	89	B	89	Not Earned	Not Earned	Not Earned	Not Earned	Not Earned	Not Earned	Not Earned
	Oak Hill Elementary	EE - 05	666	B	86	C	77	A	90	A	90	Not Earned	Not Earned	Not Earned	Not Earned	Not Earned	Not Earned	Not Earned
	Oak Springs Elementary	PK - 05	228	Not Rated	59	Not Rated	49	B	89	B	89	Not Earned	Not Earned	Not Earned	Not Earned	Not Earned	Not Earned	Not Earned
	Odom Elementary	EE - 05	313	B	88	Not Rated	64	A	93	A	93	Not Earned	Not Earned	Not Earned	Not Earned	Not Earned	Not Earned	Not Earned
	Ortega Elementary	PK - 05	208	B	87	C	75	A	91	A	91	Not Earned	Not Earned	Not Earned	Not Earned	Not Earned	Not Earned	Earned
	Overton Elementary	PK - 05	416	B	85	Not Rated	60	B	89	B	89	Not Earned	Not Earned	Not Earned	Not Earned	Not Earned	Not Earned	Not Earned
	Padron Elementary	PK - 05	526	B	85	Not Rated	56	B	89	B	89	Not Earned	Not Earned	Not Earned	Not Earned	Not Earned	Not Earned	Not Earned
	Palm Elementary	EE - 05	349	A	90	C	75	A	94	A	94	Earned	Earned	Not Earned	Earned	Not Earned	Earned	Earned
	Patton Elementary	EE - 05	697	B	89	A	90	A	92	A	92	Earned	Not Earned	Not Earned	Earned	Not Earned	Not Earned	Not Earned
Pecan Springs Elementary	EE - 05	248	Not Rated	59	Not Rated	51	Not Rated	69	Not Rated	69	Not Earned	Not Earned	Not Earned	Not Earned	Not Earned	Not Earned	Not Earned	

DISTRICT	CAMPUS	GRADES	NUMBER OF STUDENTS	OVERALL RATING	OVERALL SCORE	STUDENT ACHIEVEMENT RATING	STUDENT ACHIEVEMENT SCORE	SCHOOL PROGRESS RATING	SCHOOL PROGRESS SCORE	ACADEMIC GROWTH RATING	ACADEMIC GROWTH SCORE	DISTINCTION ELA/READING	DISTINCTION MATHEMATICS	DISTINCTION SCIENCE	DISTINCTION SOC STUDIES	DISTINCTION PROGRESS THE GAPS	DISTINCTION CLOSING POSTSECONDARY READINESS
AUSTIN ISD (CONT.)	Perez Elementary	EE - 05	410	C	72	Not Rated	56	C	72	C	72	Not Earned	Not Earned	Not Earned	Not Earned	Not Earned	Not Earned
	Pickle Elementary	EE - 05	387	B	84	Not Rated	56	B	89	B	89	Not Earned	Not Earned	Not Earned	Not Earned	Not Earned	Not Earned
	Pillow Elementary	PK - 05	376	B	87	Not Rated	67	A	94	A	94	Not Earned	Not Earned	Not Earned	Earned	Not Earned	Not Earned
	Pleasant Hill Elementary	EE - 05	353	B	82	Not Rated	60	B	85	B	85	Not Earned	Not Earned	Not Earned	Not Earned	Not Earned	Not Earned
	Reilly Elementary	EE - 05	302	C	77	C	76	C	72	C	72	Not Earned	Not Earned	Not Earned	Not Earned	Not Earned	Not Earned
	Ridgetop Elementary	PK - 05	341	A	96	A	92	A	94	A	94	Not Earned	Not Earned	Not Earned	Not Earned	Earned	Not Earned
	Rodriguez Elementary	PK - 05	329	B	87	C	70	A	91	A	91	Not Earned	Not Earned	Not Earned	Not Earned	Not Earned	Not Earned
	Sanchez Elementary	PK - 05	406	B	84	Not Rated	59	B	89	A	93	Not Earned	Not Earned	Not Earned	Earned	Not Earned	Not Earned
	St Elementarymo Elementary	PK - 05	287	A	91	C	72	A	97	A	97	Earned	Not Earned	Earned	Earned	Not Earned	Not Earned
	Summitt Elementary	EE - 05	684	A	96	A	92	A	97	A	97	Not Earned	Not Earned	Earned	Earned	Not Earned	Earned
	Sunset Valley Elementary	EE - 05	445	B	86	A	90	B	89	B	89	Not Earned	Not Earned	Not Earned	Not Earned	Not Earned	Not Earned
	Travis Hts Elementary	PK - 05	481	A	92	B	83	A	93	A	93	Earned	Not Earned	Earned	Earned	Not Earned	Not Earned
	Uphaus Early Childhood Center	EE - KG	267	A	94	Not Rated	.	Not Rated	.	Not Rated	.						
	Walnut Creek Elementary	EE - 05	608	B	85	Not Rated	55	B	89	B	89	Not Earned	Not Earned	Not Earned	Not Earned	Not Earned	Not Earned
	Widen Elementary	EE - 05	314	B	86	Not Rated	64	A	92	A	92	Not Earned	Not Earned	Not Earned	Not Earned	Not Earned	Not Earned
	Williams Elementary	EE - 05	360	B	83	C	71	B	85	B	85	Not Earned	Not Earned	Not Earned	Not Earned	Not Earned	Not Earned
	Winn Elementary	EE - 05	228	Not Rated	69	Not Rated	65	C	77	C	77	Not Earned	Not Earned	Not Earned	Not Earned	Not Earned	Not Earned
	Wooldridge Elementary	EE - 05	458	B	84	Not Rated	53	B	89	B	89	Not Earned	Not Earned	Not Earned	Not Earned	Not Earned	Not Earned
	Wooten Elementary	PK - 05	393	B	89	Not Rated	67	A	93	A	93	Not Earned	Not Earned	Not Earned	Not Earned	Not Earned	Not Earned
	Zavala Elementary	EE - 05	223	B	88	Not Rated	67	A	93	A	93	Not Earned	Not Earned	Not Earned	Earned	Not Earned	Not Earned
	Zilker Elementary	PK - 05	471	A	94	A	91	A	93	A	93	Earned	Not Earned	Earned	Earned	Not Earned	Not Earned
	Bailey Middle	06 - 08	856	B	82	B	81	B	80	B	80	Not Earned	Not Earned	Not Earned	Not Earned	Not Earned	Not Earned
	Bedichek Middle	06 - 08	669	B	88	C	72	A	90	A	90	Not Earned	Earned	Not Earned	Not Earned	Earned	Earned
	Burnet Middle	06 - 08	878	Not Rated	59	Not Rated	51	Not Rated	59	Not Rated	59	Not Earned	Not Earned	Not Earned	Not Earned	Not Earned	Not Earned
	Covington Middle	06 - 08	719	C	78	C	75	C	79	C	79	Not Earned	Not Earned	Not Earned	Not Earned	Not Earned	Not Earned
	Dobie Middle	06 - 08	642	Not Rated	59	Not Rated	48	Not Rated	56	Not Rated	56	Not Earned	Not Earned	Not Earned	Not Earned	Not Earned	Not Earned
	Garcia Ymla	06 - 08	271	C	79	Not Rated	58	C	79	C	79	Not Earned	Not Earned	Not Earned	Not Earned	Not Earned	Not Earned
	Gorzycki Middle	06 - 08	1,273	A	95	A	93	A	91	A	91	Not Earned	Not Earned	Not Earned	Not Earned	Not Earned	Not Earned
	Kealing M S	06 - 08	1,304	B	88	A	92	A	90	B	83	Earned	Earned	Not Earned	Not Earned	Not Earned	Earned
	Lamar M S	06 - 08	1,189	B	88	A	91	B	83	B	83	Not Earned	Not Earned	Earned	Not Earned	Not Earned	Not Earned
	Lively Middle	06 - 08	1,093	C	75	C	75	C	75	Not Rated	69	Not Earned	Not Earned	Not Earned	Not Earned	Not Earned	Not Earned
	Martin Middle	06 - 08	455	C	70	Not Rated	52	Not Rated	69	Not Rated	69	Not Earned	Not Earned	Not Earned	Not Earned	Not Earned	Not Earned

DISTRICT	CAMPUS	GRADES	NUMBER OF STUDENTS	OVERALL RATING	OVERALL SCORE	STUDENT ACHIEVEMENT RATING	STUDENT ACHIEVEMENT SCORE	SCHOOL PROGRESS RATING	SCHOOL PROGRESS SCORE	ACADEMIC GROWTH RATING	ACADEMIC GROWTH SCORE	DISTINCTION ELA/READING	DISTINCTION MATHEMATICS	DISTINCTION SCIENCE	DISTINCTION SOC STUDIES	DISTINCTION PROGRESS	DISTINCTION CLOSING THE GAPS	DISTINCTION POSTSECONDARY READINESS
AUSTIN ISD (CONT.)	Mendez Middle	06 - 08	484	Not Rated	59	Not Rated	52	Not Rated	59	Not Rated	59	Not Earned	Not Earned	Not Earned	Not Earned	Not Earned	Not Earned	Not Earned
	Murchison Middle	06 - 08	1,213	B	84	B	87	C	79	C	79	Not Earned	Not Earned	Not Earned	Not Earned	Not Earned	Not Earned	Not Earned
	O Henry Middle	06 - 08	816	B	84	B	85	C	79	C	79	Not Earned	Earned	Not Earned	Not Earned	Not Earned	Not Earned	Not Earned
	Paredes M S	06 - 08	752	Not Rated	68	Not Rated	57	Not Rated	66	Not Rated	66	Not Earned	Not Earned	Not Earned	Not Earned	Not Earned	Not Earned	Not Earned
	Sadler Means Ywla	06 - 08	290	C	74	Not Rated	52	C	74	C	74	Not Earned	Not Earned	Not Earned	Not Earned	Not Earned	Not Earned	Not Earned
	Small Middle	06 - 08	1,147	B	89	B	86	B	88	B	88	Not Earned	Not Earned	Not Earned	Not Earned	Earned	Earned	Not Earned
	Webb M S	06 - 08	567	Not Rated	58	Not Rated	47	Not Rated	56	Not Rated	56	Not Earned	Not Earned	Not Earned	Not Earned	Not Earned	Not Earned	Not Earned
	Akins High School	09 - 12	2,637	B	87	B	85	A	90	C	79	Earned	Not Earned	Not Earned	Not Earned	Not Earned	Earned	Earned
	Anderson High School	09 - 12	2,229	A	90	A	93	B	84	C	79	Earned	Earned	Earned	Earned	Not Earned	Not Earned	Earned
	Austin High School	09 - 12	2,379	A	90	A	94	B	85	B	85	Earned	Not Earned	Not Earned	Not Earned	Earned	Not Earned	Earned
	Bowie High School	09 - 12	2,826	A	93	A	94	B	82	B	82	Not Earned	Not Earned	Earned	Earned	Not Earned	Not Earned	Not Earned
	Crockett Echs	09 - 12	1,632	B	81	B	83	B	83	Not Rated	66	Not Earned	Not Earned	Not Earned	Not Earned	Not Earned	Not Earned	Not Earned
	Eastside Memorial Echs	09 - 12	637	C	79	C	77	B	82	C	76	Not Earned	Not Earned	Not Earned	Not Earned	Not Earned	Not Earned	Not Earned
	Garza Independence High School	11 - 12	135	A	90	B	89	Not Rated	.	Not Rated	.							
	Graduation Prep Academy Navarro	09 - 12	69	B	85	B	80	Not Rated	.	Not Rated	.							
	Graduation Preparatory Academy	09 - 12	66	B	87	B	87	Not Rated	.	Not Rated	.							
	Greenleaf Ncc	12 - 12	4	Not Rated	.	Not Rated	.	Not Rated	.	Not Rated	.							
	International High School	09 - 10	277	B	85	B	81	B	83	B	83							
	Lasa High School	09 - 12	1,309	A	99	A	99	A	94	B	86	Earned	Earned	Earned	Earned	Earned	Earned	Earned
	Lbj Echs	09 - 12	826	C	79	C	75	B	82	Not Rated	57	Not Earned	Not Earned	Not Earned	Not Earned	Not Earned	Not Earned	Not Earned
	Leadership Academy	07 - 10	9	Not Rated	.	Not Rated	.	Not Rated	.	Not Rated	.							
	Mccallum High School	09 - 12	1,816	A	93	A	94	B	84	B	84	Earned	Not Earned	Not Earned	Earned	Earned	Earned	Not Earned
	Navarro Early College High School	09 - 12	1,596	B	83	B	80	B	87	C	70	Earned	Not Earned	Not Earned	Not Earned	Not Earned	Not Earned	Earned
	Northeast Early College High School	09 - 12	1,012	C	76	C	77	C	78	Not Rated	59	Not Earned	Not Earned	Not Earned	Not Earned	Not Earned	Not Earned	Not Earned
Phoenix Academy	09 - 11	22	Not Rated	.	Not Rated	.	Not Rated	.	Not Rated	.								
Travis County Day School	09 - 11	14	Not Rated	.	Not Rated	.	Not Rated	.	Not Rated	.								
Travis County Juvenile Detention Center	07 - 11	14	Not Rated	.	Not Rated	.	Not Rated	.	Not Rated	.								
Travis Early College High School	09 - 12	1,138	B	83	C	78	B	87	Not Rated	69	Earned	Not Earned	Not Earned	Not Earned	Not Earned	Not Earned	Earned	

DISTRICT	CAMPUS	GRADES	NUMBER OF STUDENTS	OVERALL RATING	OVERALL SCORE	STUDENT ACHIEVEMENT RATING	STUDENT ACHIEVEMENT SCORE	SCHOOL PROGRESS RATING	SCHOOL PROGRESS SCORE	ACADEMIC GROWTH RATING	ACADEMIC GROWTH SCORE	DISTINCTION ELA/READING	DISTINCTION MATHEMATICS	DISTINCTION SCIENCE	DISTINCTION SOC STUDIES	DISTINCTION PROGRESS THE GAPS	DISTINCTION CLOSING THE GAPS	DISTINCTION POSTSECONDARY READINESS
BASTROP ISD	Bluebonnet Elementary	PK - 04	742	Not Rated	58	Not Rated	56	Not Rated	57	Not Rated	56	Not Earned	Not Earned			Not Earned	Not Earned	Not Earned
	Cedar Creek Elementary	PK - 04	951	C	74	Not Rated	53	C	79	C	79	Not Earned	Not Earned			Not Earned	Not Earned	Not Earned
	Emile Elementary	PK - 04	779	C	72	C	72	C	74	Not Rated	59	Not Earned	Not Earned			Not Earned	Not Earned	Not Earned
	Lost Pines Elementary	EE - 04	636	C	70	Not Rated	58	C	72	C	72	Not Earned	Not Earned			Not Earned	Not Earned	Not Earned
	Mina Elementary	EE - 04	742	B	81	B	82	B	85	Not Rated	69	Not Earned	Not Earned			Not Earned	Not Earned	Not Earned
	Red Rock Elementary	EE - 04	666	B	84	Not Rated	58	B	89	A	91	Not Earned	Not Earned			Earned	Not Earned	Not Earned
	Bastrop Intermediate	05 - 06	781	C	78	C	70	B	80	B	80	Not Earned	Not Earned	Not Earned		Not Earned	Not Earned	Not Earned
	Bastrop Middle	07 - 08	864	C	77	C	71	C	79	C	79	Not Earned	Not Earned	Not Earned	Not Earned	Not Earned	Not Earned	Not Earned
	Cedar Creek Intermediate	05 - 06	943	Not Rated	69	Not Rated	56	Not Rated	69	Not Rated	69	Not Earned	Not Earned	Not Earned		Not Earned	Not Earned	Not Earned
	Cedar Creek Middle	07 - 08	1,038	C	76	Not Rated	58	C	79	C	79	Not Earned	Not Earned	Not Earned	Not Earned	Not Earned	Not Earned	Not Earned
	Bastrop High School	09 - 12	1,556	C	75	C	78	C	78	C	78	Not Earned	Not Earned	Not Earned	Not Earned	Not Earned	Not Earned	Not Earned
	Cedar Creek High School	09 - 12	1,886	C	77	C	78	C	77	C	73	Not Earned	Not Earned	Not Earned	Not Earned	Not Earned	Not Earned	Not Earned
	Colorado River Collegiate Academy	09 - 12	241	A	99	A	98	A	96	A	94	Not Earned	Not Earned	Not Earned	Earned	Earned	Earned	Earned
Genesis High School	09 - 12	122	C	72	C	76	Not Rated	.	Not Rated	.								
DEL VALLE ISD	Baty Elementary	EE - 05	512	C	77	Not Rated	48	B	80	B	80	Not Earned	Not Earned	Not Earned		Not Earned	Not Earned	Not Earned
	Creedmoor Elementary	PK - 05	460	B	84	Not Rated	62	B	88	B	88	Not Earned	Not Earned	Not Earned		Not Earned	Not Earned	Not Earned
	Del Valle Elementary	EE - 05	608	B	83	Not Rated	56	B	86	B	86	Not Earned	Not Earned	Not Earned		Not Earned	Not Earned	Not Earned
	Hillcrest Elementary	PK - 05	386	B	84	Not Rated	57	B	88	B	88	Not Earned	Not Earned	Not Earned		Not Earned	Not Earned	Not Earned
	Hornsby-Dunlap Elementary	EE - 05	560	Not Rated	68	Not Rated	50	Not Rated	69	Not Rated	69	Not Earned	Not Earned	Not Earned		Not Earned	Not Earned	Not Earned
	Joseph Gilbert Elementary	PK - 05	647	B	87	C	71	A	90	A	90	Not Earned	Not Earned	Not Earned		Not Earned	Not Earned	Not Earned
	Newton Collins Elementary	EE - 05	669	B	84	Not Rated	59	B	89	A	91	Not Earned	Earned	Not Earned		Not Earned	Not Earned	Not Earned
	Popham Elementary	EE - 05	573	C	78	Not Rated	65	B	80	B	80	Not Earned	Not Earned	Not Earned		Not Earned	Not Earned	Not Earned
	Smith Elementary	PK - 05	312	A	97	B	88	A	96	A	96	Earned	Earned	Earned		Earned	Earned	Earned
	Dailey Middle	06 - 08	888	C	73	Not Rated	57	C	74	C	74	Not Earned	Not Earned	Not Earned	Not Earned	Not Earned	Not Earned	Not Earned
	Del Valle Middle	06 - 08	879	B	83	Not Rated	67	B	85	B	85	Not Earned	Not Earned	Not Earned	Not Earned	Not Earned	Earned	Not Earned
	John P Ojeda Middle	06 - 08	800	C	72	Not Rated	59	C	72	C	72	Not Earned	Not Earned	Not Earned	Not Earned	Not Earned	Not Earned	Not Earned
	Del Valle High School	09 - 12	3,395	C	79	C	78	B	81	C	70	Not Earned	Not Earned	Earned	Earned	Not Earned	Not Earned	Not Earned
	Del Valle Opportunity Ctr	09 - 12	164	B	83	B	83	Not Rated	.	Not Rated	.							

DISTRICT	CAMPUS	GRADES	NUMBER OF STUDENTS	OVERALL RATING	OVERALL SCORE	STUDENT ACHIEVEMENT RATING	STUDENT ACHIEVEMENT SCORE	SCHOOL PROGRESS RATING	SCHOOL PROGRESS SCORE	ACADEMIC GROWTH RATING	ACADEMIC GROWTH SCORE	DISTINCTION ELA/READING	DISTINCTION MATHEMATICS	DISTINCTION SCIENCE	DISTINCTION SOC STUDIES	DISTINCTION PROGRESS	DISTINCTION CLOSING THE GAPS	DISTINCTION POSTSECONDARY READINESS	
DRIPPING SPRINGS ISD	Cypress Springs Elementary	PK - 05	531	A	94	A	91	A	91	A	91	Not Earned	Not Earned	Not Earned		Not Earned	Earned	Not Earned	
	Dripping Springs Elementary	EE - 05	882	B	87	A	90	B	88	B	88	Not Earned	Not Earned	Not Earned		Not Earned	Not Earned	Not Earned	
	Rooster Springs Elementary	PK - 05	834	A	94	A	92	A	92	A	92	Not Earned	Not Earned	Not Earned		Not Earned	Earned	Not Earned	
	Sycamore Springs Elementary	EE - 05	691	A	91	A	92	B	86	B	86	Not Earned	Not Earned	Not Earned		Not Earned	Not Earned	Not Earned	
	Walnut Springs Elementary	PK - 05	785	A	90	A	91	A	91	A	91	Not Earned	Not Earned	Not Earned		Not Earned	Not Earned	Not Earned	
	Dripping Springs Middle	06 - 08	890	B	89	A	90	B	85	B	85	Not Earned	Not Earned	Not Earned	Not Earned	Not Earned	Not Earned	Not Earned	Not Earned
	Sycamore Springs Middle	06 - 08	921	A	91	A	92	B	89	B	89	Not Earned	Not Earned	Not Earned	Not Earned	Not Earned	Not Earned	Not Earned	Not Earned
	Dripping Springs High School	09 - 12	2,325	B	89	A	93	C	75	C	75	Not Earned	Not Earned	Not Earned	Not Earned	Not Earned	Not Earned	Not Earned	Not Earned
EANES ISD	Barton Creek Elementary	KG - 05	504	A	95	A	94	A	92	A	92	Not Earned	Not Earned	Not Earned		Not Earned	Not Earned	Not Earned	
	Bridge Point Elementary	KG - 05	583	A	92	A	93	B	85	B	85	Not Earned	Not Earned	Not Earned		Not Earned	Not Earned	Not Earned	
	Cedar Creek Elementary	KG - 05	527	A	92	A	94	A	91	A	91	Not Earned	Not Earned	Not Earned		Not Earned	Not Earned	Earned	
	Eanes Elementary	EE - 05	543	A	95	A	93	A	92	A	92	Not Earned	Not Earned	Not Earned		Earned	Earned	Not Earned	
	Forest Trail Elementary	KG - 05	560	A	95	A	93	A	90	A	90	Not Earned	Not Earned	Not Earned		Not Earned	Earned	Not Earned	
	Valley View Elementary	KG - 05	355	A	91	A	91	A	92	A	92	Not Earned	Not Earned	Not Earned		Not Earned	Not Earned	Not Earned	
	Hill Country Middle	06 - 08	1,010	A	97	A	95	A	94	A	94	Earned	Earned	Not Earned	Earned	Earned	Earned	Earned	Earned
	West Ridge Middle	06 - 08	894	A	96	A	94	A	91	A	91	Not Earned	Not Earned	Not Earned	Earned	Not Earned	Earned	Not Earned	
	Adult Transition Services	12 - 12	24	Not Rated	.	Not Rated	.	Not Rated	.	Not Rated	.								
	Westlake High School	09 - 12	2,809	A	98	A	97	B	81	C	75	Earned	Earned	Earned	Earned	Not Earned	Earned	Earned	Earned
GEORGETOWN ISD	Annie Purl Elementary	EE - 05	610	C	72	Not Rated	52	C	74	C	74	Not Earned	Not Earned	Not Earned		Not Earned	Not Earned	Not Earned	
	Carver Elementary	PK - 05	727	B	82	C	75	B	85	B	85	Not Earned	Not Earned	Not Earned		Not Earned	Not Earned	Not Earned	
	Frost Elementary	EE - 05	362	B	82	Not Rated	57	B	86	B	86	Not Earned	Not Earned	Not Earned		Not Earned	Not Earned	Not Earned	
	James E Mitchell Elementary	PK - 05	665	B	82	Not Rated	65	B	85	B	85	Not Earned	Not Earned	Not Earned		Not Earned	Not Earned	Not Earned	

DISTRICT	CAMPUS	GRADES	NUMBER OF STUDENTS	OVERALL RATING	OVERALL SCORE	STUDENT ACHIEVEMENT RATING	STUDENT ACHIEVEMENT SCORE	SCHOOL PROGRESS RATING	SCHOOL PROGRESS SCORE	ACADEMIC GROWTH RATING	ACADEMIC GROWTH SCORE	DISTINCTION ELA/READING	DISTINCTION MATHEMATICS	DISTINCTION SCIENCE	DISTINCTION SOC STUDIES	DISTINCTION PROGRESS THE GAPS	DISTINCTION CLOSING THE GAPS	DISTINCTION POSTSECONDARY READINESS
GEORGETOWN ISD (CONT.)	Jo Ann Ford Elementary	KG - 05	533	B	84	B	88	C	77	C	77	Not Earned	Not Earned	Not Earned	Not Earned	Not Earned	Not Earned	Not Earned
	Pat Cooper Elementary	EE - 05	586	Not Rated	68	Not Rated	59	Not Rated	69	Not Rated	69	Not Earned	Not Earned	Not Earned	Not Earned	Not Earned	Not Earned	Not Earned
	Raye McCoey Elementary	KG - 05	480	C	79	B	80	Not Rated	67	Not Rated	67	Not Earned	Not Earned	Not Earned	Not Earned	Not Earned	Not Earned	Not Earned
	Village Elementary	EE - 05	458	C	72	C	73	Not Rated	59	Not Rated	59	Not Earned	Not Earned	Not Earned	Not Earned	Not Earned	Not Earned	Not Earned
	Williams Elementary	EE - 05	526	C	72	Not Rated	56	C	74	C	74	Not Earned	Not Earned	Not Earned	Not Earned	Not Earned	Not Earned	Not Earned
	Wolf Ranch Elementary	EE - 05	654	B	80	C	77	B	83	B	83	Not Earned	Not Earned	Not Earned	Not Earned	Not Earned	Not Earned	Not Earned
	Charles A Forbes Middle	06 - 08	653	C	75	C	75	C	75	C	75	Not Earned	Not Earned	Not Earned	Not Earned	Not Earned	Not Earned	Not Earned
	Douglas Benold Middle	06 - 08	726	B	85	B	86	B	85	B	85	Not Earned	Not Earned	Not Earned	Not Earned	Not Earned	Not Earned	Not Earned
	George Wagner Middle	06 - 08	858	Not Rated	54	Not Rated	58	Not Rated	55	Not Rated	55	Not Earned	Not Earned	Not Earned	Not Earned	Not Earned	Not Earned	Not Earned
	James Tippit Middle	06 - 08	580	C	70	C	70	C	70	C	70	Not Earned	Not Earned	Not Earned	Not Earned	Not Earned	Not Earned	Not Earned
	Chip Richarte High School	10 - 12	74	A	97	A	92	Not Rated	.	Not Rated	.							
	East View High School	09 - 12	2,043	C	79	B	82	C	78	Not Rated	57	Not Earned	Not Earned	Not Earned	Not Earned	Not Earned	Not Earned	Earned
	Georgetown Alter Prog	07 - 12	39	Not Rated	.	Not Rated	.	Not Rated	.	Not Rated	.							
	Georgetown High School	09 - 12	1,982	B	84	B	87	C	76	Not Rated	58	Not Earned	Not Earned	Not Earned	Not Earned	Not Earned	Not Earned	Not Earned
	STEP - CORE	09 - 11	5	Not Rated	.	Not Rated	.	Not Rated	.	Not Rated	.							
STEP - Detention	08 - 10	4	Not Rated	.	Not Rated	.	Not Rated	.	Not Rated	.								
STEP - JJAEP	09 - 09	1	Not Rated	.	Not Rated	.	Not Rated	.	Not Rated	.								
HAYS ISD	Alter Impact Ctr	05 - 12	85	Not Rated	.	Not Rated	.	Not Rated	.	Not Rated	.							
	Blanco Vista Elementary	PK - 05	710	B	88	C	78	B	89	B	89	Not Earned	Not Earned	Not Earned	Not Earned	Not Earned	Not Earned	Not Earned
	Buda Elementary	EE - 05	678	A	91	B	85	A	91	A	91	Not Earned	Not Earned	Not Earned	Earned	Not Earned	Not Earned	Not Earned
	Camino Real Elementary	EE - 05	774	B	83	Not Rated	67	B	86	B	86	Not Earned	Not Earned	Not Earned	Not Earned	Not Earned	Not Earned	Not Earned
	Carpenter Hill Elementary	EE - 05	606	A	94	A	92	A	92	A	92	Not Earned	Not Earned	Not Earned	Not Earned	Earned	Earned	Earned
	Elm Grove Elementary	PK - 05	758	A	94	A	92	B	85	B	85	Not Earned	Not Earned	Not Earned	Not Earned	Earned	Earned	Not Earned
	Hemphill Elementary	EE - 05	428	B	87	C	72	A	91	A	91	Not Earned	Not Earned	Not Earned	Earned	Not Earned	Not Earned	Not Earned
	Kyle Elementary	EE - 05	578	C	78	C	76	B	80	B	80	Not Earned	Not Earned	Not Earned	Not Earned	Not Earned	Not Earned	Not Earned
	Laura B Negley Elementary	EE - 05	913	B	87	B	89	B	82	B	82	Not Earned	Not Earned	Not Earned	Not Earned	Not Earned	Not Earned	Not Earned
	Ralph Pfluger Elementary	EE - 05	771	A	91	B	82	A	90	A	90	Not Earned	Not Earned	Not Earned	Not Earned	Earned	Earned	Not Earned
Science Hall Elementary	PK - 05	607	B	81	C	70	B	83	B	83	Not Earned	Not Earned	Not Earned	Not Earned	Not Earned	Not Earned	Not Earned	

DISTRICT	CAMPUS	GRADES	NUMBER OF STUDENTS	OVERALL RATING	OVERALL SCORE	STUDENT ACHIEVEMENT RATING	STUDENT ACHIEVEMENT SCORE	SCHOOL PROGRESS RATING	SCHOOL PROGRESS SCORE	ACADEMIC GROWTH RATING	ACADEMIC GROWTH SCORE	DISTINCTION ELA/READING	DISTINCTION MATHEMATICS	DISTINCTION SCIENCE	DISTINCTION SOC STUDIES	DISTINCTION CLOSING THE GAPS	DISTINCTION POSTSECONDARY READINESS	
HAYS ISD (CONT.)	Susie Fuentes Elementary	EE - 05	654	B	82	C	73	B	83	B	83	Not Earned	Not Earned	Not Earned	Not Earned	Not Earned	Not Earned	
	Tobias Elementary	EE - 05	646	C	76	C	77	C	77	C	77	Not Earned	Not Earned	Not Earned	Not Earned	Not Earned	Not Earned	
	Tom Green Elementary	EE - 05	830	C	78	Not Rated	69	C	79	C	79	Not Earned	Not Earned	Not Earned	Not Earned	Not Earned	Not Earned	
	Uhland Elementary	KG - 05	730	B	84	Not Rated	58	B	89	A	93	Not Earned	Not Earned	Earned	Earned	Not Earned	Not Earned	
	Armando Chapa Middle	06 - 08	671	B	83	C	75	B	85	B	85	Earned	Not Earned	Not Earned	Not Earned	Earned	Not Earned	Not Earned
	D J Red Simon Middle	06 - 08	718	Not Rated	65	Not Rated	56	Not Rated	63	Not Rated	63	Not Earned	Not Earned	Not Earned	Not Earned	Not Earned	Not Earned	Not Earned
	Dr T C Mccormick Jr Middle	06 - 08	1,013	B	84	C	78	B	84	B	84	Not Earned	Not Earned	Not Earned	Not Earned	Earned	Earned	Not Earned
	Eric Dahlstrom Middle	06 - 08	955	B	89	A	91	B	84	B	84	Not Earned	Not Earned	Not Earned	Not Earned	Not Earned	Not Earned	Not Earned
	Laura B Wallace Middle	06 - 08	791	C	75	C	75	C	75	C	75	Not Earned	Not Earned	Earned	Not Earned	Not Earned	Not Earned	Not Earned
	R C Barton Middle	06 - 08	758	A	94	A	91	A	92	A	92	Earned	Earned	Earned	Earned	Earned	Earned	Earned
	Jack C Hays High School	09 - 12	1,937	A	90	B	85	A	91	A	91	Not Earned	Not Earned	Earned	Not Earned	Earned	Earned	Not Earned
	Lehman High School	09 - 12	2,023	C	77	C	75	C	78	C	73	Not Earned	Not Earned	Not Earned	Not Earned	Not Earned	Not Earned	Not Earned
	Live Oak Academy	09 - 12	259	C	79	B	83	B	81	B	81							
	Moe And Gene Johnson High School	09 - 12	2,452	B	88	B	88	B	88	B	88	Not Earned	Earned	Not Earned	Not Earned	Earned	Earned	Not Earned
HUTTO ISD	Benjamin Doc Kerley Elementary	EE - 05	727	B	83	C	77	B	85	B	85	Not Earned	Not Earned	Not Earned	Not Earned	Not Earned	Not Earned	
	Cottonwood Creek Elementary	EE - 05	611	B	82	C	72	B	83	B	83	Not Earned	Not Earned	Not Earned	Not Earned	Not Earned	Not Earned	
	Howard Norman Elementary	EE - 05	550	B	83	C	76	B	86	B	86	Not Earned	Not Earned	Not Earned	Not Earned	Not Earned	Not Earned	
	Hutto Elementary	PK - 05	625	C	79	C	75	B	80	B	80	Not Earned	Not Earned	Not Earned	Not Earned	Not Earned	Not Earned	
	Nadine Johnson Elementary	EE - 05	568	C	77	C	72	C	79	C	79	Not Earned	Not Earned	Not Earned	Not Earned	Not Earned	Not Earned	
	Ray Elementary	PK - 05	597	C	76	C	76	C	75	C	75	Not Earned	Not Earned	Not Earned	Not Earned	Not Earned	Not Earned	
	Veterans Hill Elementary	PK - 05	578	C	79	C	76	B	80	B	80	Not Earned	Not Earned	Not Earned	Not Earned	Not Earned	Not Earned	
	Farley Middle	06 - 08	1,027	C	78	C	72	C	79	C	79	Not Earned	Not Earned	Not Earned	Not Earned	Not Earned	Not Earned	
	Hutto Middle	06 - 08	1,104	B	82	B	80	B	83	B	83	Not Earned	Not Earned	Not Earned	Not Earned	Not Earned	Not Earned	
	Hutto High School	09 - 12	1,858	B	82	B	84	B	83	B	83	Not Earned	Earned	Not Earned	Not Earned	Earned	Not Earned	Not Earned
	Hutto Ninth Grade Center	09 - 09	686	C	78	C	79	C	78	Not Rated	57	Not Earned	Not Earned	Not Earned	Not Earned	Not Earned	Not Earned	
	Step - Jjaep	09 - 09	1	Not Rated	.	Not Rated	.	Not Rated	.	Not Rated	.							

DISTRICT	CAMPUS	GRADES	NUMBER OF STUDENTS	OVERALL RATING	OVERALL SCORE	STUDENT ACHIEVEMENT RATING	STUDENT ACHIEVEMENT SCORE	SCHOOL PROGRESS RATING	SCHOOL PROGRESS SCORE	ACADEMIC GROWTH RATING	ACADEMIC GROWTH SCORE	DISTINCTION ELA/READING	DISTINCTION MATHEMATICS	DISTINCTION SCIENCE	DISTINCTION SOC STUDIES	DISTINCTION PROGRESS THE GAPS	DISTINCTION CLOSING THE GAPS	DISTINCTION POSTSECONDARY READINESS
LAKE TRAVIS ISD	Bee Cave Elementary	KG - 05	714	A	93	A	91	B	89	B	89	Not Earned	Not Earned	Not Earned		Not Earned	Not Earned	Not Earned
	Lake Pointe Elementary	EE - 05	715	A	95	A	93	B	86	B	86	Not Earned	Not Earned	Not Earned		Not Earned	Earned	Not Earned
	Lake Travis Elementary	EE - 05	777	Not Rated	62	Not Rated	67	Not Rated	65	Not Rated	65	Not Earned	Not Earned	Not Earned		Not Earned	Not Earned	Not Earned
	Lakeway Elementary	EE - 05	542	A	93	A	92	A	90	A	90	Not Earned	Not Earned	Not Earned		Not Earned	Not Earned	Not Earned
	Rough Hollow Elementary	KG - 05	816	B	87	A	91	B	80	B	80	Not Earned	Not Earned	Not Earned		Not Earned	Not Earned	Not Earned
	Serene Hills Elementary	EE - 05	562	A	92	A	91	B	89	B	89	Not Earned	Not Earned	Not Earned		Not Earned	Not Earned	Not Earned
	West Cypress Hills Elementary	KG - 05	555	C	78	C	79	C	75	C	75	Not Earned	Not Earned	Not Earned		Not Earned	Not Earned	Not Earned
	Bee Cave Middle	06 - 08	823	A	96	A	94	A	91	A	91	Not Earned	Not Earned	Not Earned	Earned	Not Earned	Earned	Not Earned
	Hudson Bend Middle	06 - 08	934	B	84	B	88	C	77	C	77	Not Earned	Not Earned	Not Earned	Earned	Not Earned	Not Earned	Not Earned
	Lake Travis Middle	06 - 08	870	A	94	A	92	B	89	B	89	Not Earned	Not Earned	Not Earned	Not Earned	Not Earned	Earned	Not Earned
	Lake Travis High School	09 - 12	3,645	B	89	A	93	C	79	C	79	Not Earned	Not Earned	Not Earned	Not Earned	Not Earned	Not Earned	Not Earned
LEANDER ISD	Leander Extended Opportunity	05 - 12	50	Not Rated	.	Not Rated	.	Not Rated	.	Not Rated	.							
	Ada Mae Faubion Elementary	EE - 05	399	C	75	C	75	C	75	C	75	Not Earned	Not Earned	Not Earned		Not Earned	Not Earned	Not Earned
	Bagdad Elementary	EE - 05	702	C	74	Not Rated	67	C	75	C	75	Not Earned	Not Earned	Not Earned		Not Earned	Not Earned	Not Earned
	Block House Creek Elementary	KG - 05	493	C	74	C	74	C	74	C	74	Not Earned	Not Earned	Not Earned		Not Earned	Not Earned	Not Earned
	C C Mason Elementary	KG - 05	647	B	80	C	77	B	83	B	83	Not Earned	Not Earned	Not Earned		Not Earned	Not Earned	Not Earned
	Charlotte Cox Elementary	EE - 05	644	B	84	B	88	B	83	B	83	Not Earned	Not Earned	Not Earned		Not Earned	Not Earned	Not Earned
	Christine Camacho Elementary	EE - 05	708	Not Rated	65	Not Rated	64	Not Rated	58	Not Rated	58	Not Earned	Not Earned	Not Earned		Not Earned	Not Earned	Not Earned
	Cypress Elementary	EE - 05	553	A	92	A	91	A	93	A	93	Not Earned	Not Earned	Not Earned		Earned	Not Earned	Not Earned
	Deer Creek Elementary	EE - 05	663	B	87	A	91	B	88	B	88	Not Earned	Not Earned	Not Earned		Not Earned	Not Earned	Not Earned
	Grandview Hills Elementary	EE - 05	482	B	85	C	78	B	88	B	88	Not Earned	Not Earned	Not Earned		Not Earned	Not Earned	Not Earned
	Jim Plain Elementary	EE - 05	798	B	87	C	79	B	88	B	88	Not Earned	Not Earned	Not Earned		Not Earned	Not Earned	Not Earned
	Larkspur Elementary	EE - 05	924	C	72	C	72	Not Rated	65	Not Rated	65	Not Earned	Not Earned	Not Earned		Not Earned	Not Earned	Not Earned
	Laura Welch Bush Elementary	EE - 05	563	A	97	A	95	A	96	A	96	Earned	Earned	Earned		Earned	Earned	Earned
	Lois F Giddens Elementary	EE - 05	472	C	71	Not Rated	62	C	74	C	74	Not Earned	Not Earned	Not Earned		Not Earned	Not Earned	Not Earned

DISTRICT	CAMPUS	GRADES	NUMBER OF STUDENTS	OVERALL RATING	OVERALL SCORE	STUDENT ACHIEVEMENT RATING	STUDENT ACHIEVEMENT SCORE	SCHOOL PROGRESS RATING	SCHOOL PROGRESS SCORE	ACADEMIC GROWTH RATING	ACADEMIC GROWTH SCORE	DISTINCTION ELA/READING	DISTINCTION MATHEMATICS	DISTINCTION SCIENCE	DISTINCTION SOC STUDIES	DISTINCTION PROGRESS THE GAPS	DISTINCTION CLOSING THE GAPS	DISTINCTION POSTSECONDARY READINESS
LEANDER ISD (CONT.)	Monta Jane Akin Elementary	KG - 05	880	B	87	A	91	B	83	B	83	Not Earned	Not Earned	Not Earned	Not Earned	Not Earned	Not Earned	Not Earned
	Officer Leonard A Reed Elementary	KG - 05	662	B	83	C	75	B	86	B	86	Not Earned	Not Earned	Not Earned	Not Earned	Not Earned	Not Earned	Not Earned
	Parkside Elementary	KG - 05	745	A	90	A	92	B	88	B	88	Not Earned	Not Earned	Not Earned	Not Earned	Not Earned	Not Earned	Not Earned
	Patricia Knowles Elementary	EE - 05	641	Not Rated	69	C	70	Not Rated	65	Not Rated	65	Not Earned	Not Earned	Not Earned	Not Earned	Not Earned	Not Earned	Not Earned
	Pauline Naumann Elementary	EE - 05	458	B	86	A	90	C	79	C	79	Not Earned	Not Earned	Earned	Not Earned	Not Earned	Not Earned	Not Earned
	Pleasant Hill Elementary	EE - 05	660	B	83	C	72	B	86	B	86	Not Earned	Not Earned	Not Earned	Not Earned	Not Earned	Not Earned	Not Earned
	River Place Elementary	KG - 05	640	B	83	B	86	B	82	B	82	Not Earned	Not Earned	Not Earned	Not Earned	Not Earned	Not Earned	Not Earned
	River Ridge Elementary	KG - 05	534	A	97	A	95	A	94	A	94	Not Earned	Earned	Not Earned	Earned	Earned	Earned	Earned
	Ronald Reagan Elementary	KG - 05	801	B	87	A	90	B	83	B	83	Not Earned	Not Earned	Not Earned	Not Earned	Not Earned	Not Earned	Not Earned
	Rutledge Elementary	KG - 05	951	B	89	A	92	B	89	B	89	Not Earned	Not Earned	Not Earned	Not Earned	Not Earned	Not Earned	Not Earned
	Steiner Ranch Elementary	KG - 05	490	A	90	A	91	A	91	A	91	Not Earned	Not Earned	Not Earned	Not Earned	Not Earned	Not Earned	Not Earned
	Tarvin Elementary	EE - 05	525	A	91	A	91	A	90	A	90	Not Earned	Not Earned	Not Earned	Not Earned	Not Earned	Not Earned	Not Earned
	Westside Elementary	KG - 05	563	B	87	B	82	B	89	B	89	Not Earned	Not Earned	Not Earned	Not Earned	Not Earned	Not Earned	Not Earned
	Whitestone Elementary	KG - 05	902	B	88	B	88	B	88	B	88	Not Earned	Not Earned	Not Earned	Not Earned	Not Earned	Not Earned	Not Earned
	William J Winkley Elementary	EE - 05	714	A	90	A	91	A	91	A	91	Not Earned	Not Earned	Not Earned	Not Earned	Not Earned	Not Earned	Not Earned
	Artie L Henry Middle	06 - 08	1,322	B	86	B	86	B	83	B	83	Not Earned	Not Earned	Not Earned	Not Earned	Not Earned	Not Earned	Not Earned
	Canyon Ridge Middle	06 - 08	1,163	A	92	A	93	B	84	B	84	Not Earned	Not Earned	Not Earned	Not Earned	Not Earned	Not Earned	Not Earned
	Cedar Park Middle	06 - 08	1,323	B	88	A	90	B	83	B	83	Not Earned	Not Earned	Not Earned	Not Earned	Not Earned	Not Earned	Not Earned
	Florence W Stiles Middle	06 - 08	1,442	A	96	A	94	A	92	A	92	Not Earned	Not Earned	Not Earned	Not Earned	Not Earned	Earned	Not Earned
	Four Points Middle	06 - 08	681	B	86	A	90	C	79	C	79	Not Earned	Not Earned	Not Earned	Earned	Not Earned	Not Earned	Not Earned
	Knox Wiley Middle	06 - 08	781	C	75	C	75	C	74	C	74	Not Earned	Not Earned	Not Earned	Not Earned	Not Earned	Not Earned	Not Earned
	Leander Middle	06 - 08	821	B	81	B	82	B	81	B	81	Not Earned	Not Earned	Not Earned	Not Earned	Not Earned	Not Earned	Not Earned
	Running Brushy Middle	06 - 08	1,091	B	85	B	85	B	80	B	80	Not Earned	Not Earned	Not Earned	Not Earned	Not Earned	Not Earned	Not Earned
Stacy Kaye Danielson Middle	06 - 08	1,207	B	84	B	80	B	84	B	84	Not Earned	Not Earned	Not Earned	Not Earned	Not Earned	Not Earned	Not Earned	
Cedar Park High School	09 - 12	2,004	A	93	A	95	B	85	B	85	Not Earned	Not Earned	Not Earned	Not Earned	Earned	Not Earned	Earned	
Glenn High School	09 - 12	1,976	B	83	B	86	C	78	Not Rated	68	Not Earned	Not Earned	Not Earned	Not Earned	Not Earned	Not Earned	Not Earned	
Leander High School	09 - 12	2,180	B	87	A	91	B	82	C	73	Not Earned	Not Earned	Not Earned	Not Earned	Not Earned	Not Earned	Earned	

DISTRICT	CAMPUS	GRADES	NUMBER OF STUDENTS	OVERALL RATING	OVERALL SCORE	STUDENT ACHIEVEMENT RATING	STUDENT ACHIEVEMENT SCORE	SCHOOL PROGRESS RATING	SCHOOL PROGRESS SCORE	ACADEMIC GROWTH RATING	ACADEMIC GROWTH SCORE	DISTINCTION ELA/READING	DISTINCTION MATHEMATICS	DISTINCTION SCIENCE	DISTINCTION SOC STUDIES	DISTINCTION PROGRESS THE GAPS	DISTINCTION CLOSING THE GAPS	DISTINCTION POSTSECONDARY READINESS	
LEANDER ISD (CONT.)	New Hope High School	11 - 12	60	A	94	A	93	Not Rated	.	Not Rated	.								
	Rouse High School	09 - 12	1,912	A	92	A	95	B	80	Not Rated	68	Not Earned	Not Earned	Not Earned	Not Earned	Not Earned	Not Earned	Earned	
	Step - Core	11 - 12	3	Not Rated	.	Not Rated	.	Not Rated	.	Not Rated	.								
	Vandegrift High School	09 - 12	2,719	A	93	A	96	B	83	C	73	Earned	Earned	Earned	Earned	Not Earned	Not Earned	Earned	
	Vista Ridge High School	09 - 12	2,594	A	92	A	95	B	84	B	83	Not Earned	Not Earned	Earned	Not Earned	Earned	Not Earned	Earned	
LIBERTY HILL ISD	Bill Burden Elementary	EE - 05	805	A	94	A	90	A	91	A	91	Not Earned	Not Earned	Not Earned		Not Earned	Earned	Not Earned	
	Liberty Hill Elementary	EE - 05	534	B	83	B	86	C	75	C	70	Not Earned	Not Earned	Not Earned		Not Earned	Not Earned	Not Earned	
	Louine Noble Elementary	EE - 05	565	C	79	C	72	B	82	B	82	Not Earned	Not Earned	Not Earned		Not Earned	Not Earned	Not Earned	
	Rancho Sienna Elementary	EE - 05	741	A	94	A	91	A	92	A	92	Not Earned	Not Earned	Not Earned		Not Earned	Earned	Not Earned	
	Santa Rita Elementary	EE - 05	802	B	86	C	79	B	88	B	88	Not Earned	Not Earned	Not Earned		Not Earned	Not Earned	Not Earned	
	Liberty Hill Middle	06 - 08	911	B	80	B	82	C	72	C	72	Not Earned	Not Earned	Not Earned	Not Earned	Not Earned	Not Earned	Not Earned	Not Earned
	Santa Rita Middle	06 - 08	686	B	83	B	86	B	83	B	83	Not Earned	Not Earned	Not Earned	Not Earned	Not Earned	Not Earned	Not Earned	Not Earned
	Leander Extended Opportunity Center (Leo)	09 - 12	7	Not Rated	.	Not Rated	.	Not Rated	.	Not Rated	.								
	Liberty Hill High School	09 - 12	1,771	B	86	A	90	C	74	Not Rated	58	Not Earned	Not Earned	Not Earned	Not Earned	Not Earned	Not Earned	Not Earned	Not Earned
	Step - Detention	11 - 11	1	Not Rated	.	Not Rated	.	Not Rated	.	Not Rated	.								
	Step - Jjaep	10 - 10	1	Not Rated	.	Not Rated	.	Not Rated	.	Not Rated	.								
PFLUGERVILLE ISD	Brookhollow Elementary	EE - 05	381	B	83	C	77	B	86	B	86	Not Earned	Not Earned	Not Earned		Not Earned	Not Earned	Not Earned	
	Caldwell Elementary	EE - 05	547	B	83	C	71	B	86	B	86	Not Earned	Not Earned	Not Earned		Not Earned	Not Earned	Not Earned	
	Carpenter Elementary	EE - 05	470	A	91	B	80	A	91	A	91	Not Earned	Not Earned	Not Earned		Not Earned	Not Earned	Not Earned	
	Copperfield Elementary	EE - 05	485	B	87	C	72	B	88	B	88	Not Earned	Not Earned	Earned		Not Earned	Earned	Earned	
	Dearing Elementary	EE - 05	594	C	77	C	79	B	80	C	75	Not Earned	Not Earned	Not Earned		Not Earned	Not Earned	Not Earned	
	Dessau Elementary	EE - 05	573	Not Rated	56	Not Rated	51	Not Rated	58	Not Rated	58	Not Earned	Not Earned	Not Earned		Not Earned	Not Earned	Not Earned	
	Highland Park Elementary	EE - 05	694	A	93	A	91	B	85	B	85	Not Earned	Not Earned	Not Earned		Not Earned	Not Earned	Not Earned	
	Mott Elementary	PK - 05	822	B	88	B	80	B	89	B	89	Not Earned	Not Earned	Not Earned		Not Earned	Not Earned	Not Earned	
	Murchison Elementary	EE - 05	775	A	91	A	92	A	91	A	91	Not Earned	Not Earned	Not Earned		Not Earned	Not Earned	Not Earned	
	Northwest Elementary	EE - 05	414	B	81	Not Rated	64	B	83	B	83	Not Earned	Not Earned	Not Earned		Not Earned	Not Earned	Not Earned	

DISTRICT	CAMPUS	GRADES	NUMBER OF STUDENTS	OVERALL RATING	OVERALL SCORE	STUDENT ACHIEVEMENT RATING	STUDENT ACHIEVEMENT SCORE	SCHOOL PROGRESS RATING	SCHOOL PROGRESS SCORE	ACADEMIC GROWTH RATING	ACADEMIC GROWTH SCORE	DISTINCTION ELA/READING	DISTINCTION MATHEMATICS	DISTINCTION SCIENCE	DISTINCTION SOC STUDIES	DISTINCTION PROGRESS THE GAPS	DISTINCTION CLOSING POSTSECONDARY READINESS	
PFLUGERVILLE ISD (CONT.)	Parmer Lane Elementary	EE - 05	460	B	85	C	74	B	88	B	88	Not Earned	Not Earned	Earned		Not Earned	Not Earned	Not Earned
	Pflugerville Elementary	EE - 05	406	B	87	C	73	A	91	A	91	Not Earned	Not Earned	Not Earned		Not Earned	Not Earned	Not Earned
	Riojas Elementary	EE - 05	866	C	77	C	79	C	72	C	72	Not Earned	Not Earned	Not Earned		Not Earned	Not Earned	Not Earned
	River Oaks Elementary	EE - 05	375	B	89	C	74	A	92	A	92	Earned	Not Earned	Earned		Earned	Earned	Earned
	Rowe Lane Elementary	EE - 05	816	A	92	A	91	A	90	A	90	Not Earned	Not Earned	Not Earned		Not Earned	Not Earned	Not Earned
	Ruth Barron Elementary	EE - 05	568	B	82	Not Rated	58	B	86	B	86	Not Earned	Not Earned	Not Earned		Not Earned	Not Earned	Not Earned
	Springhill Elementary	EE - 05	482	Not Rated	65	Not Rated	64	Not Rated	65	Not Rated	65	Not Earned	Not Earned	Not Earned		Not Earned	Not Earned	Not Earned
	Timmerman Elementary	EE - 05	429	C	74	C	70	C	75	C	75	Not Earned	Not Earned	Not Earned		Not Earned	Not Earned	Not Earned
	Wieland Elementary	EE - 05	379	B	84	C	75	B	86	B	86	Not Earned	Not Earned	Not Earned		Not Earned	Not Earned	Not Earned
	Wilhelmina Delco Elementary	EE - 05	505	B	83	Not Rated	69	B	86	B	86	Not Earned	Not Earned	Not Earned		Not Earned	Not Earned	Not Earned
	Windermere Elementary	EE - 05	659	C	79	C	76	B	80	B	80	Not Earned	Not Earned	Not Earned		Not Earned	Not Earned	Not Earned
	Bohls Middle	06 - 08	724	C	78	C	77	C	79	C	79	Not Earned	Not Earned	Not Earned	Not Earned	Not Earned	Not Earned	Not Earned
	Cele Middle	06 - 08	726	A	93	A	91	B	89	B	89	Not Earned	Not Earned	Not Earned	Not Earned	Not Earned	Not Earned	Not Earned
	Dessau Middle	06 - 08	721	C	71	Not Rated	59	C	72	C	72	Not Earned	Not Earned	Not Earned	Not Earned	Not Earned	Not Earned	Not Earned
	Kelly Lane Middle	06 - 08	1,037	B	88	A	90	B	84	B	84	Not Earned	Not Earned	Not Earned	Not Earned	Not Earned	Not Earned	Not Earned
	Park Crest Middle	06 - 08	880	C	75	C	75	C	70	C	70	Not Earned	Not Earned	Not Earned	Not Earned	Not Earned	Not Earned	Not Earned
	Pflugerville Middle	06 - 08	857	C	73	C	72	Not Rated	66	Not Rated	66	Not Earned	Not Earned	Not Earned	Earned	Not Earned	Not Earned	Not Earned
	Westview Middle	06 - 08	657	Not Rated	59	Not Rated	58	Not Rated	59	Not Rated	59	Not Earned	Not Earned	Not Earned	Not Earned	Not Earned	Not Earned	Not Earned
	Hendrickson High School	09 - 12	2,138	B	89	A	92	B	84	B	84	Not Earned	Not Earned	Not Earned	Not Earned	Earned	Not Earned	Not Earned
	John B Connally High School	09 - 12	1,780	C	70	C	74	C	71	Not Rated	57	Not Earned	Not Earned	Not Earned	Not Earned	Not Earned	Not Earned	Not Earned
Pflugerville High School	09 - 12	1,844	B	85	B	87	B	82	C	76	Earned	Earned	Earned	Earned	Not Earned	Not Earned	Earned	
Travis Co J J A E P	09 - 09	1	Not Rated	.	Not Rated	.	Not Rated	.	Not Rated	.								
Weiss High School	09 - 12	2,283	C	76	C	77	C	75	Not Rated	68	Not Earned	Not Earned	Not Earned	Not Earned	Not Earned	Not Earned	Not Earned	
ROUND ROCK ISD	Round Rock Opport Ctr Daep	06 - 12	73	Not Rated	.	Not Rated	.	Not Rated	.	Not Rated	.							
	Anderson Mill Elementary	PK - 05	423	C	76	Not Rated	67	C	77	C	77	Not Earned	Not Earned	Not Earned		Not Earned	Not Earned	Not Earned
	Blackland Prairie Elementary	EE - 05	637	A	90	A	91	B	89	B	89	Not Earned	Not Earned	Not Earned		Not Earned	Not Earned	Not Earned
	Bluebonnet Elementary	PK - 05	327	B	82	Not Rated	52	B	86	B	86	Not Earned	Not Earned	Not Earned		Not Earned	Not Earned	Not Earned
	Brushy Creek Elementary	EE - 05	517	B	89	B	83	A	92	A	92	Not Earned	Not Earned	Not Earned		Earned	Not Earned	Not Earned
Cactus Ranch Elementary	EE - 05	572	A	97	A	96	A	96	A	96	Earned	Earned	Earned		Earned	Earned	Earned	

DISTRICT	CAMPUS	GRADES	NUMBER OF STUDENTS	OVERALL RATING	OVERALL SCORE	STUDENT ACHIEVEMENT RATING	STUDENT ACHIEVEMENT SCORE	SCHOOL PROGRESS RATING	SCHOOL PROGRESS SCORE	ACADEMIC GROWTH RATING	ACADEMIC GROWTH SCORE	DISTINCTION ELA/READING	DISTINCTION MATHEMATICS	DISTINCTION SCIENCE	DISTINCTION SOC STUDIES	DISTINCTION PROGRESS THE GAPS	DISTINCTION CLOSING THE GAPS	DISTINCTION POSTSECONDARY READINESS
ROUND ROCK ISD (CONT.)	Caldwell Heights Elementary	EE - 05	560	B	82	C	73	B	85	B	85	Not Earned	Not Earned	Not Earned	Not Earned	Not Earned	Not Earned	Not Earned
	Canyon Creek Elementary	KG - 05	331	A	97	A	96	A	95	A	95	Earned	Earned	Earned	Earned	Earned	Earned	Earned
	Chandler Oaks Elementary	EE - 05	503	A	95	A	92	A	93	A	93	Not Earned	Not Earned	Not Earned	Earned	Earned	Earned	Not Earned
	Claude Berkman Elementary	PK - 05	368	C	79	Not Rated	51	B	83	B	83	Not Earned	Not Earned	Not Earned	Not Earned	Not Earned	Not Earned	Not Earned
	Deep Wood Elementary	EE - 05	309	B	89	A	90	B	88	B	88	Not Earned	Earned	Earned	Not Earned	Not Earned	Not Earned	Not Earned
	Double File Trail Elementary	EE - 05	519	B	83	B	82	B	83	B	83	Not Earned	Not Earned	Earned	Not Earned	Not Earned	Not Earned	Not Earned
	Elsa England Elementary	KG - 05	589	A	97	A	95	A	96	A	96	Earned	Earned	Earned	Earned	Earned	Earned	Earned
	Fern Bluff Elementary	PK - 05	561	A	95	A	93	A	93	A	93	Not Earned	Earned	Earned	Earned	Earned	Earned	Not Earned
	Forest Creek Elementary	KG - 05	621	A	91	A	90	B	89	B	89	Not Earned	Not Earned	Not Earned	Not Earned	Not Earned	Not Earned	Not Earned
	Forest North Elementary	EE - 05	242	A	91	C	79	A	96	A	96	Earned	Not Earned	Not Earned	Earned	Not Earned	Not Earned	Not Earned
	Gattis Elementary	EE - 05	559	B	82	C	74	B	86	B	86	Not Earned	Not Earned	Not Earned	Not Earned	Not Earned	Not Earned	Not Earned
	Great Oaks Elementary	EE - 05	719	A	93	A	93	A	93	A	93	Not Earned	Not Earned	Not Earned	Earned	Not Earned	Not Earned	Not Earned
	Joe Lee Johnson Elementary	PK - 05	631	C	70	Not Rated	67	C	72	C	72	Not Earned	Not Earned	Not Earned	Not Earned	Not Earned	Not Earned	Not Earned
	Jollyville Elementary	EE - 05	463	B	80	C	77	B	82	B	82	Not Earned	Not Earned	Not Earned	Not Earned	Not Earned	Not Earned	Not Earned
	Kathy Caraway Elementary	EE - 05	449	A	94	A	93	B	89	B	89	Not Earned	Not Earned	Not Earned	Not Earned	Not Earned	Not Earned	Not Earned
	Laurel Mountain Elementary	PK - 05	546	A	97	A	95	A	95	A	95	Earned	Earned	Earned	Earned	Earned	Earned	Earned
	Linda Herrington Elementary	EE - 05	669	A	97	A	93	A	96	A	96	Not Earned	Not Earned	Earned	Earned	Earned	Earned	Not Earned
	Live Oak Elementary	EE - 05	402	B	86	C	74	B	89	B	89	Not Earned	Not Earned	Not Earned	Not Earned	Not Earned	Not Earned	Not Earned
	Neysa Callison Elementary	EE - 05	603	C	72	Not Rated	57	C	74	C	74	Not Earned	Not Earned	Not Earned	Not Earned	Not Earned	Not Earned	Not Earned
	Old Town Elementary	PK - 05	537	B	81	C	78	B	82	B	82	Not Earned	Not Earned	Not Earned	Not Earned	Not Earned	Not Earned	Not Earned
	Patsy Sommer Elementary	EE - 05	684	A	97	A	95	A	93	A	93	Earned	Earned	Not Earned	Not Earned	Earned	Earned	Earned
	Pond Springs Elementary	EE - 05	456	B	89	B	85	A	90	A	90	Not Earned	Not Earned	Not Earned	Not Earned	Not Earned	Not Earned	Not Earned
	Purple Sage Elementary	EE - 05	358	A	94	A	90	A	92	A	92	Not Earned	Not Earned	Not Earned	Not Earned	Not Earned	Earned	Not Earned
Redbud Elementary	EE - 05	2,979	A	91	A	90	B	88	B	88	Not Earned	Not Earned	Not Earned	Not Earned	Not Earned	Not Earned	Not Earned	
Spicewood Elementary	KG - 05	621	A	95	A	93	A	93	A	93	Not Earned	Not Earned	Not Earned	Not Earned	Not Earned	Earned	Not Earned	

DISTRICT	CAMPUS	GRADES	NUMBER OF STUDENTS	OVERALL RATING	OVERALL SCORE	STUDENT ACHIEVEMENT RATING	STUDENT ACHIEVEMENT SCORE	SCHOOL PROGRESS RATING	SCHOOL PROGRESS SCORE	ACADEMIC GROWTH RATING	ACADEMIC GROWTH SCORE	DISTINCTION ELA/READING	DISTINCTION MATHEMATICS	DISTINCTION SCIENCE	DISTINCTION SOC STUDIES	DISTINCTION PROGRESS THE GAPS	DISTINCTION CLOSING THE GAPS	DISTINCTION POSTSECONDARY READINESS	
ROUND ROCK ISD (CONT.)	Teravista Elementary	EE - 05	700	A	91	A	90	A	92	A	92	Not Earned	Not Earned	Not Earned	Not Earned	Not Earned	Not Earned	Not Earned	
	Union Hill Elementary	EE - 05	610	B	81	Not Rated	67	B	83	B	83	Not Earned	Not Earned	Not Earned	Not Earned	Not Earned	Not Earned	Not Earned	
	Vic Robertson Elementary	PK - 05	356	C	74	Not Rated	57	C	75	C	75	Not Earned	Not Earned	Not Earned	Not Earned	Not Earned	Not Earned	Not Earned	
	Wells Branch Elementary	EE - 05	387	B	81	Not Rated	54	B	85	B	85	Not Earned	Not Earned	Not Earned	Not Earned	Not Earned	Not Earned	Not Earned	
	Xenia Voigt Elementary	EE - 05	439	C	78	Not Rated	65	C	79	C	79	Not Earned	Not Earned	Not Earned	Not Earned	Not Earned	Not Earned	Not Earned	
	C D Fulkes Middle	06 - 08	587	C	72	Not Rated	62	C	72	C	72	Not Earned	Not Earned	Not Earned	Not Earned	Not Earned	Not Earned	Not Earned	
	Canyon Vista Middle	06 - 08	1,290	A	97	A	96	A	95	A	95	Earned	Earned	Earned	Earned	Earned	Earned	Earned	
	Cedar Valley Middle	06 - 08	1,248	A	96	A	94	A	94	A	94	Earned	Earned	Not Earned	Earned	Earned	Earned	Not Earned	
	Chisholm Trail Middle	06 - 08	855	A	90	B	88	A	90	A	90	Not Earned	Not Earned	Not Earned	Not Earned	Earned	Not Earned	Not Earned	
	Deerpark Middle	06 - 08	875	B	84	B	81	B	85	B	85	Not Earned	Not Earned	Not Earned	Not Earned	Earned	Not Earned	Not Earned	
	Hopewell Middle	06 - 08	1,155	B	81	B	83	C	77	C	77	Not Earned	Not Earned	Not Earned	Not Earned	Not Earned	Not Earned	Not Earned	
	James Garland Walsh Middle	06 - 08	1,210	A	96	A	94	A	93	A	93	Not Earned	Earned	Earned	Earned	Earned	Earned	Not Earned	
	Noel Grisham Middle	06 - 08	586	B	89	A	91	B	89	B	89	Not Earned	Not Earned	Not Earned	Not Earned	Not Earned	Not Earned	Not Earned	
	Pearson Ranch Middle	06 - 08	919	A	95	A	94	A	94	A	94	Earned	Earned	Earned	Not Earned	Earned	Not Earned	Earned	
	Pfc Robert P Hernandez Middle	06 - 08	688	C	73	C	73	Not Rated	66	Not Rated	66	Not Earned	Not Earned	Not Earned	Not Earned	Not Earned	Not Earned	Not Earned	
	Ridgeview Middle	06 - 08	1,222	A	94	A	91	A	91	A	91	Not Earned	Not Earned	Not Earned	Not Earned	Earned	Earned	Not Earned	
	Cedar Ridge High School	09 - 12	2,739	B	88	A	90	B	82	C	76	Not Earned	Not Earned	Earned	Not Earned	Not Earned	Not Earned	Earned	
	Mcneil High School	09 - 12	2,479	A	92	A	95	B	87	C	76	Earned	Earned	Earned	Not Earned	Not Earned	Not Earned	Earned	
	Round Rock High School	09 - 12	3,712	A	92	A	95	B	82	B	81	Earned	Earned	Earned	Not Earned	Not Earned	Not Earned	Earned	
	Rrisd Early College High School	09 - 12	381	A	93	A	95	A	93	B	85	Earned	Not Earned	Not Earned	Not Earned	Not Earned	Not Earned	Earned	
	STEP - CORE	09 - 11	8	Not Rated	.	Not Rated	.	Not Rated	.	Not Rated
	STEP - Detention	09 - 11	5	Not Rated	.	Not Rated	.	Not Rated	.	Not Rated
STEP - JJAEP	09 - 09	3	Not Rated	.	Not Rated	.	Not Rated	.	Not Rated	
Stony Point High School	09 - 12	2,597	B	84	B	87	C	76	C	70	Not Earned	Not Earned	Not Earned	Not Earned	Not Earned	Not Earned	Not Earned		
Success High School	09 - 12	334	B	80	B	83	Not Rated	.	Not Rated	
Westwood High School	09 - 12	2,777	A	93	A	96	B	86	B	83	Earned	Earned	Earned	Earned	Earned	Not Earned	Earned		

DISTRICT	CAMPUS	GRADES	NUMBER OF STUDENTS	OVERALL RATING	OVERALL SCORE	STUDENT ACHIEVEMENT RATING	STUDENT ACHIEVEMENT SCORE	SCHOOL PROGRESS RATING	SCHOOL PROGRESS SCORE	ACADEMIC GROWTH RATING	ACADEMIC GROWTH SCORE	DISTINCTION ELA/READING	DISTINCTION MATHEMATICS	DISTINCTION SCIENCE	DISTINCTION SOC STUDIES	DISTINCTION PROGRESS THE GAPS	DISTINCTION CLOSING THE GAPS	DISTINCTION POSTSECONDARY READINESS
SAN MARCOS CISD	Bowie Elementary	KG - 05	449	C	73	Not Rated	60	C	74	C	74	Not Earned	Not Earned	Not Earned	Not Earned	Not Earned	Not Earned	Not Earned
	Crockett Elementary	KG - 05	536	B	87	C	76	A	91	A	91	Not Earned	Not Earned	Not Earned	Earned	Not Earned	Not Earned	Not Earned
	Dezavala Elementary	KG - 05	571	C	75	Not Rated	59	C	77	C	77	Not Earned	Not Earned	Not Earned	Not Earned	Not Earned	Not Earned	Not Earned
	Hernandez Elementary	KG - 05	550	B	83	C	78	B	85	B	85	Not Earned	Not Earned	Earned	Not Earned	Not Earned	Not Earned	Not Earned
	Mendez Elementary	KG - 05	462	B	85	Not Rated	57	B	89	B	89	Not Earned	Not Earned	Not Earned	Not Earned	Not Earned	Not Earned	Not Earned
	Rodriguez Elementary	KG - 05	372	B	87	C	72	A	91	A	91	Earned	Earned	Earned	Earned	Not Earned	Not Earned	Not Earned
	Travis Elementary	KG - 05	522	B	81	Not Rated	67	B	85	B	85	Not Earned	Not Earned	Earned	Not Earned	Not Earned	Not Earned	Not Earned
	Goodnight Middle	06 - 08	871	Not Rated	62	Not Rated	57	Not Rated	60	Not Rated	59	Not Earned	Not Earned	Not Earned	Not Earned	Not Earned	Not Earned	Not Earned
	Miller Middle	06 - 08	977	Not Rated	65	Not Rated	65	Not Rated	69	Not Rated	55	Not Earned	Not Earned	Not Earned	Not Earned	Not Earned	Not Earned	Not Earned
	San Marcos High School	09 - 12	2,447	C	77	C	73	B	80	C	76	Not Earned	Not Earned	Not Earned	Not Earned	Not Earned	Not Earned	Not Earned
WIMBERLEY ISD	Blue Hole Pri	PK - 02	627	C	79	Not Rated	.	Not Rated	.	Not Rated	.							
	Jacob'S Well Elementary	03 - 05	535	C	79	B	80	C	74	C	74	Not Earned	Not Earned	Not Earned	Not Earned	Not Earned	Not Earned	Not Earned
	Danforth Junior High	06 - 08	615	B	86	B	88	B	81	B	81	Earned	Not Earned	Not Earned	Not Earned	Not Earned	Not Earned	Not Earned
	Wimberley High School	09 - 12	829	B	89	A	93	C	79	Not Rated	59	Earned	Earned	Earned	Earned	Not Earned	Not Earned	Not Earned
AUSTIN ACHIEVE PUBLIC SCHOOLS	Austin Achieve Elementary	PK - 04	945	Not Rated	69	Not Rated	58	Not Rated	69	Not Rated	69	Not Earned	Not Earned			Not Earned	Not Earned	Not Earned
	Austin Achieve Parmer	PK - 06	144	C	79	Not Rated	51	B	83	B	83	Not Earned	Not Earned			Not Earned	Not Earned	Not Earned
	Austin Achieve Middle	05 - 08	602	Not Rated	69	Not Rated	54	C	70	C	70	Not Earned	Not Earned	Not Earned	Not Earned	Not Earned	Not Earned	Not Earned
	Austin Achieve High School	09 - 12	621	B	84	C	75	B	87	C	76	Earned	Earned	Not Earned	Earned	Not Earned	Earned	Earned
AUSTIN DISCOVERY SCHOOL	Austin Discovery School	KG - 08	430	C	74	C	74	C	75	C	75	Not Earned	Not Earned	Not Earned		Not Earned	Not Earned	Not Earned

DISTRICT	CAMPUS	GRADES	NUMBER OF STUDENTS	OVERALL RATING	OVERALL SCORE	STUDENT ACHIEVEMENT RATING	STUDENT ACHIEVEMENT SCORE	SCHOOL PROGRESS RATING	SCHOOL PROGRESS SCORE	ACADEMIC GROWTH RATING	ACADEMIC GROWTH SCORE	DISTINCTION ELA/READING	DISTINCTION MATHEMATICS	DISTINCTION SCIENCE	DISTINCTION SOC STUDIES	DISTINCTION PROGRESS THE GAPS	DISTINCTION CLOSING THE GAPS	DISTINCTION POSTSECONDARY READINESS
CEDARS INTERNATIONAL ACADEMY	Cedars Intermediate National Academy	PK - 08	383	A	91	C	74	A	95	A	95	Not Earned	Not Earned	Not Earned	Not Earned	Earned	Not Earned	Not Earned
	Cedars Academy Next Generation High School At Highland	09 - 12	113	B	87	B	88	B	88	B	87	Not Earned	Not Earned	Not Earned	Not Earned	Earned	Earned	Not Earned
CHAPARRAL STAR ACADEMY	Chaparral Star Academy	KG - 12	354	A	95	A	91	A	93	A	93	Earned	Earned	Earned	Earned	Earned	Earned	Earned
KATHERINE ANNE PORTER SCHOOL	Katherine Anne Porter School	09 - 12	74	C	70	Not Rated	69	C	70	C	70	Not Earned	Not Earned	Not Earned	Not Earned	Not Earned		Not Earned
KI CHARTER ACADEMY	Ki Charter Academy	01 - 12	161	Not Rated	.	Not Rated	.	Not Rated	.	Not Rated	.							
	Ki Charter Academy Liberty Hill	05 - 12	99	Not Rated	.	Not Rated	.	Not Rated	.	Not Rated	.							
	Ki Charter - Desoto	07 - 12	21	Not Rated	.	Not Rated	.	Not Rated	.	Not Rated	.							
MERIDIAN WORLD SCHOOL LLC	Meridian World School Llc	KG - 12	1,683	A	96	A	96	A	90	A	90	Earned	Earned	Earned	Earned	Not Earned	Not Earned	Earned

DISTRICT	CAMPUS	GRADES	NUMBER OF STUDENTS	OVERALL RATING	OVERALL SCORE	STUDENT ACHIEVEMENT RATING	STUDENT ACHIEVEMENT SCORE	SCHOOL PROGRESS RATING	SCHOOL PROGRESS SCORE	ACADEMIC GROWTH RATING	ACADEMIC GROWTH SCORE	DISTINCTION ELA/READING	DISTINCTION MATHEMATICS	DISTINCTION SCIENCE	DISTINCTION SOC STUDIES	DISTINCTION PROGRESS THE GAPS	DISTINCTION CLOSING THE GAPS	DISTINCTION POSTSECONDARY READINESS
MONTESSORI FOR ALL	Magnolia Montessori For All	PK - 06	470	C	77	C	74	C	79	C	79	Not Earned	Not Earned	Not Earned		Not Earned	Not Earned	Not Earned
	Nyos Charter School	06 - 12	613	B	87	A	90	B	84	B	84	Not Earned	Earned	Not Earned	Not Earned	Not Earned	Not Earned	Not Earned
NYOS CHARTER SCHOOL	Nyos - Magnolia Mccullough Campus	PK - 05	809	A	92	B	89	A	92	A	92	Not Earned	Not Earned	Not Earned		Not Earned	Not Earned	Not Earned
	Texas Empowerment Academy	03 - 12	277	B	88	B	86	A	92	A	92	Not Earned	Earned	Not Earned	Earned	Earned	Not Earned	Earned
TEXAS EMPOWERMENT ACADEMY	Texas Empowerment Academy Elementary	PK - 02	115	Not Rated		Not Rated		Not Rated		Not Rated								
	Texas Preparatory School	KG - 06	72	C	75	Not Rated	62	C	75	C	75	Not Earned	Not Earned			Not Earned		Not Earned
TEXAS PREPARATORY SCHOOL	Texas Preparatory School - Austin Campus	KG - 06	48	A	95	C	71	A	95	A	95	Not Earned	Not Earned		Earned			Not Earned
	University Of Texas At Austin High School	09 - 12	666	B	89	B	82	A	91	A	91	Earned	Earned	Earned	Earned	Earned	Not Earned	Earned

DISTRICT	CAMPUS	GRADES	NUMBER OF STUDENTS	OVERALL RATING	OVERALL SCORE	STUDENT ACHIEVEMENT RATING	STUDENT ACHIEVEMENT SCORE	SCHOOL PROGRESS RATING	SCHOOL PROGRESS SCORE	ACADEMIC GROWTH RATING	ACADEMIC GROWTH SCORE	DISTINCTION ELA/READING	DISTINCTION MATHEMATICS	DISTINCTION SCIENCE	DISTINCTION SOC STUDIES	DISTINCTION PROGRESS THE GAPS	DISTINCTION CLOSING POSTSECONDARY READINESS
UNIVERSITY OF TEXAS ELEMENTARY CHARTER SCHOOL	University Of Texas Elementary Charter School	PK - 05	302	B	89	B	85	A	90	A	90	Earned	Earned	Earned	Not Earned	Earned	Earned
UNIVERSITY OF TEXAS UNIVERSITY CHARTER SCHOOL	Austin Oaks	04 - 11	19	Not Rated	.	Not Rated	.	Not Rated	.	Not Rated	.						
	Cedar Crest	06 - 12	88	Not Rated	.	Not Rated	.	Not Rated	.	Not Rated	.						
	Laurel Ridge	01 - 12	44	Not Rated	.	Not Rated	.	Not Rated	.	Not Rated	.						
	Methodist Children'S Home	06 - 12	85	Not Rated	.	Not Rated	.	Not Rated	.	Not Rated	.						
	Pathfinder Camp	05 - 10	20	Not Rated	.	Not Rated	.	Not Rated	.	Not Rated	.						
	Pathways 3H Campus	06 - 11	18	Not Rated	.	Not Rated	.	Not Rated	.	Not Rated	.						
	Settlement Home	06 - 12	23	Not Rated	.	Not Rated	.	Not Rated	.	Not Rated	.						
	Tnc Campus (Texas Neurorehabilitation Center)	02 - 12	59	Not Rated	.	Not Rated	.	Not Rated	.	Not Rated	.						
	Ut - University Charter School At High Point	KG - 12	39	Not Rated	.	Not Rated	.	Not Rated	.	Not Rated	.						
	Depelchin-Richmond	03 - 07	15	Not Rated	.	Not Rated	.	Not Rated	.	Not Rated	.						
	Helping Hand	02 - 06	17	Not Rated	.	Not Rated	.	Not Rated	.	Not Rated	.						
	Olympia Hills	04 - 08	18	A	94	A	93	A	94	A	94	Earned	Earned		Earned		Not Earned
	Annunciation Maternity Home	11 - 11	2	Not Rated	.	Not Rated	.	Not Rated	.	Not Rated	.						
Clearfork Academy	09 - 12	19	Not Rated	.	Not Rated	.	Not Rated	.	Not Rated	.							
Georgetown Behavioral Health Institute	07 - 11	8	Not Rated	.	Not Rated	.	Not Rated	.	Not Rated	.							

DISTR ICT	CAMPUS	GRADES	NUMBER OF STUDENTS	OVERALL RATING	OVERALL SCORE	STUDENT ACHIEVEMENT RATING	STUDENT ACHIEVEMENT SCORE	SCHOOL PROGRESS RATING	SCHOOL PROGRESS SCORE	ACADEMIC GROWTH RATING	ACADEMIC GROWTH SCORE	DISTINCTION ELA/READING	DISTINCTION MATHEMATICS	DISTINCTION SCIENCE	DISTINCTION SOC STUDIES	DISTINCTION PROGRESS THE GAPS	DISTINCTION CLOSING POSTSECONDARY READINESS
UNIVERSITY OF TEXAS UNIVERSITY CHARTER SCHOOL (CONT.)	Munday	10 - 12	7	Not Rated	.	Not Rated	.	Not Rated	.	Not Rated	.						
	Safe Haven	07 - 10	9	Not Rated	.	Not Rated	.	Not Rated	.	Not Rated	.						
	Seton Home	08 - 11	7	Not Rated	.	Not Rated	.	Not Rated	.	Not Rated	.						
	Sjrc Texas	08 - 12	16	Not Rated	.	Not Rated	.	Not Rated	.	Not Rated	.						
	The Refuge	09 - 12	11	Not Rated	.	Not Rated	.	Not Rated	.	Not Rated	.						
	University High School	09 - 12	8	Not Rated	.	Not Rated	.	Not Rated	.	Not Rated	.						